



# **2011 Budget Report**

## **Monthly Activity**

### **August 2011**

Nicola Sapp

County Budget Officer

October 25, 2011

# Presentation Overview

1. August 2011 Sales & Use Tax Activity
2. August 2011 Activity – Unrestricted Funds
  - Road & Bridge Fund
  - Human Services Fund
  - Self-Insurance Fund
  - Community Investment Fund
  - Retirement Fund
  - General Fund (Unrestricted)



# **Sales & Use Tax Activity**

## **August 2011**



# Historical Sales Tax Collections

## August 31, 2011

	2007	2008	2009	2010	2011	% Chg '07 to '08	% Chg '08 to '09	% Chg '09 to '10	% Chg '10 to '11	Cumulative % Chg '07 to '11	Cumulative % Chg '10 to '11
January	4,669,476	4,638,369	4,325,250	4,297,569	4,303,519	(0.67%)	(6.75%)	(0.64%)	0.14%	(7.84%)	0.14%
February	4,780,698	4,852,133	4,393,823	4,570,811	4,891,936	1.49%	(9.45%)	4.03%	7.03%	(2.70%)	3.69%
March	5,381,750	5,442,730	4,921,391	5,165,463	5,441,770	1.13%	(9.58%)	4.96%	5.35%	(1.31%)	4.30%
April	5,126,774	5,240,216	4,547,331	4,882,977	5,345,940	2.21%	(13.22%)	7.38%	9.48%	0.12%	5.64%
May	5,341,924	5,549,282	5,193,361	5,387,615	5,485,436	3.88%	(6.41%)	3.74%	1.82%	0.66%	4.79%
June	5,982,211	5,937,739	5,604,199	5,625,441	5,961,361	(0.74%)	(5.62%)	0.38%	5.97%	0.47%	5.01%
July	5,661,302	5,630,748	5,298,458	5,535,362	5,810,745	(0.54%)	(5.90%)	4.47%	4.97%	0.80%	5.01%
August	5,656,019	5,705,099	5,424,865	5,642,651	5,645,162	0.87%	(4.91%)	4.01%	0.04%	0.67%	4.33%
September	5,762,129	5,429,489	5,121,831	5,495,533		(5.77%)	(5.67%)	7.30%			
October	5,292,976	5,075,261	4,861,809	5,355,120		(4.11%)	(4.21%)	10.15%			
November	5,197,507	4,917,786	4,753,762	5,166,106		(5.38%)	(3.34%)	8.67%			
December	6,487,768	5,769,281	5,940,631	6,294,203		(11.07%)	2.97%	5.95%			
Year Total	65,340,533	64,188,132	60,386,710	63,418,851	42,885,870	(1.76%)	(5.92%)	5.02%	4.33%	0.67%	4.33%



# Historical Sales Tax Collections

## August 31, 2011



	Jan	Feb	Mar	Apr	May	Jun	Jul	Aug	Sep	Oct	Nov	Dec
2007	4,669,476	4,780,698	5,381,750	5,126,774	5,341,924	5,982,211	5,661,302	5,656,019	5,762,129	5,292,976	5,197,507	6,487,768
2008	4,638,369	4,852,133	5,442,730	5,240,216	5,549,282	5,937,739	5,630,748	5,705,099	5,429,489	5,075,261	4,917,786	5,769,281
2009	4,325,250	4,393,823	4,921,391	4,547,331	5,193,361	5,604,199	5,298,458	5,424,865	5,121,831	4,861,809	4,753,762	5,940,631
2010	4,297,569	4,570,811	5,165,463	4,882,977	5,387,615	5,625,441	5,535,362	5,642,651	5,495,533	5,355,120	5,166,106	6,294,203
2011	4,303,519	4,891,936	5,441,770	5,345,940	5,485,436	5,961,361	5,810,745	5,645,162				



# Sales Tax – Budget to Actual

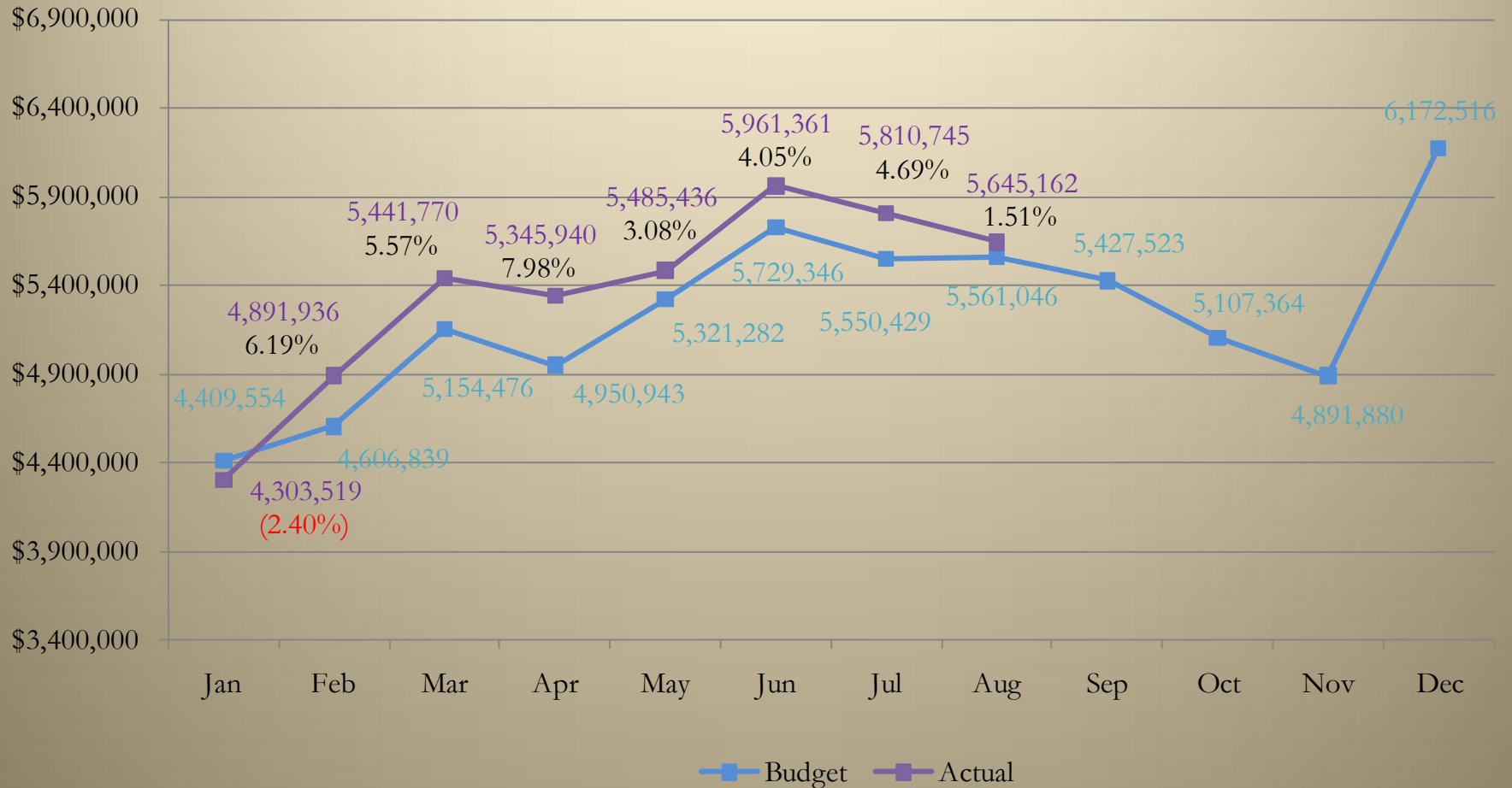
## August 31, 2011

	Historical Percentage	Budget	Actual	\$ Chg Budget to Actual	% Chg Budget to Actual	Cumulative % Chg
January	7.01%	4,409,554	4,303,519	(106,035)	(2.40%)	(2.40%)
February	7.33%	4,606,839	4,891,936	285,097	6.19%	1.99%
March	8.20%	5,154,476	5,441,770	287,294	5.57%	3.29%
April	7.87%	4,950,943	5,345,940	394,997	7.98%	4.50%
May	8.46%	5,321,282	5,485,436	164,154	3.08%	4.20%
June	9.11%	5,729,346	5,961,361	232,015	4.05%	4.17%
July	8.83%	5,550,429	5,810,745	260,317	4.69%	4.25%
August	8.84%	5,561,046	5,645,162	84,117	1.51%	3.88%
September	8.63%	5,427,523				
October	8.12%	5,107,364				
November	7.78%	4,891,880				
December	9.82%	6,172,516				
	<b>100%</b>	<b>62,883,196</b>	<b>42,885,870</b>	<b>1,601,957</b>		<b>3.88%</b>



# Sales Tax – Budget to Actual

## August 31, 2011



# Historical Use Tax on Automobiles

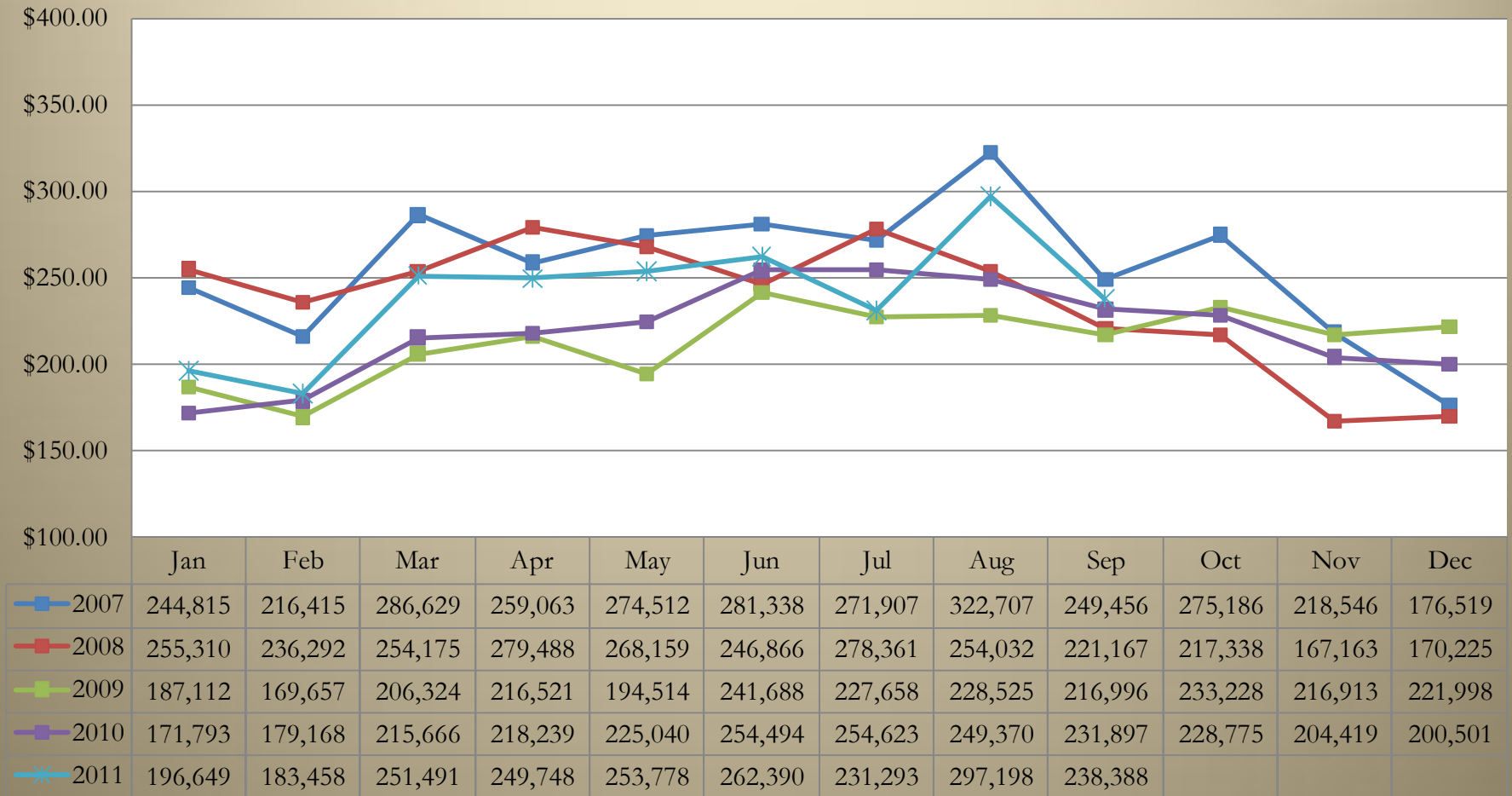
## September 30, 2011

	2007	2008	2009	2010	2011	% Chg '07 to '08	% Chg '08 to '09	% Chg '09 to '10	% Chg '10 to '11	Cumulative % Chg '07 to '11	Cumulative % Chg '10 to '11
January	244,815	255,310	187,112	171,793	196,649	4.29%	(26.71%)	(8.19%)	14.47%	(19.67%)	14.47%
February	216,415	236,292	169,657	179,168	183,458	9.18%	(28.20%)	5.61%	2.39%	(17.59%)	8.30%
March	286,629	254,175	206,324	215,666	251,491	(11.32%)	(18.83%)	4.53%	16.61%	(15.55%)	11.47%
April	259,063	279,488	216,521	218,239	249,748	7.88%	(22.53%)	0.79%	14.44%	(12.47%)	12.29%
May	274,512	268,159	194,514	225,040	253,778	(2.31%)	(27.46%)	15.69%	12.77%	(11.42%)	12.40%
June	281,338	246,866	241,688	254,494	262,390	(12.25%)	(2.10%)	5.30%	3.10%	(10.57%)	10.53%
July	271,907	278,361	227,658	254,623	231,293	2.37%	(18.21%)	11.84%	(9.16%)	(11.22%)	7.23%
August	322,707	254,032	228,525	249,370	297,198	(21.28%)	(10.04%)	9.12%	19.18%	(10.73%)	8.91%
September	249,456	221,167	216,996	231,897	238,388	(11.34%)	(1.89%)	6.87%	2.80%	(10.07%)	8.20%
October	275,186	217,338	233,228	228,775		(21.02%)	7.31%	(1.91%)			
November	218,546	167,163	216,913	204,419		(23.51%)	29.76%	(5.76%)			
December	176,519	170,225	221,998	200,501		(3.57%)	30.41%	(9.68%)			
Year Total	3,077,092	2,848,576	2,561,135	2,633,983	2,164,392	(7.43%)	(10.09%)	2.84%	8.20%	(10.07%)	8.20%



# Historical Use Tax on Automobiles

## September 30, 2011



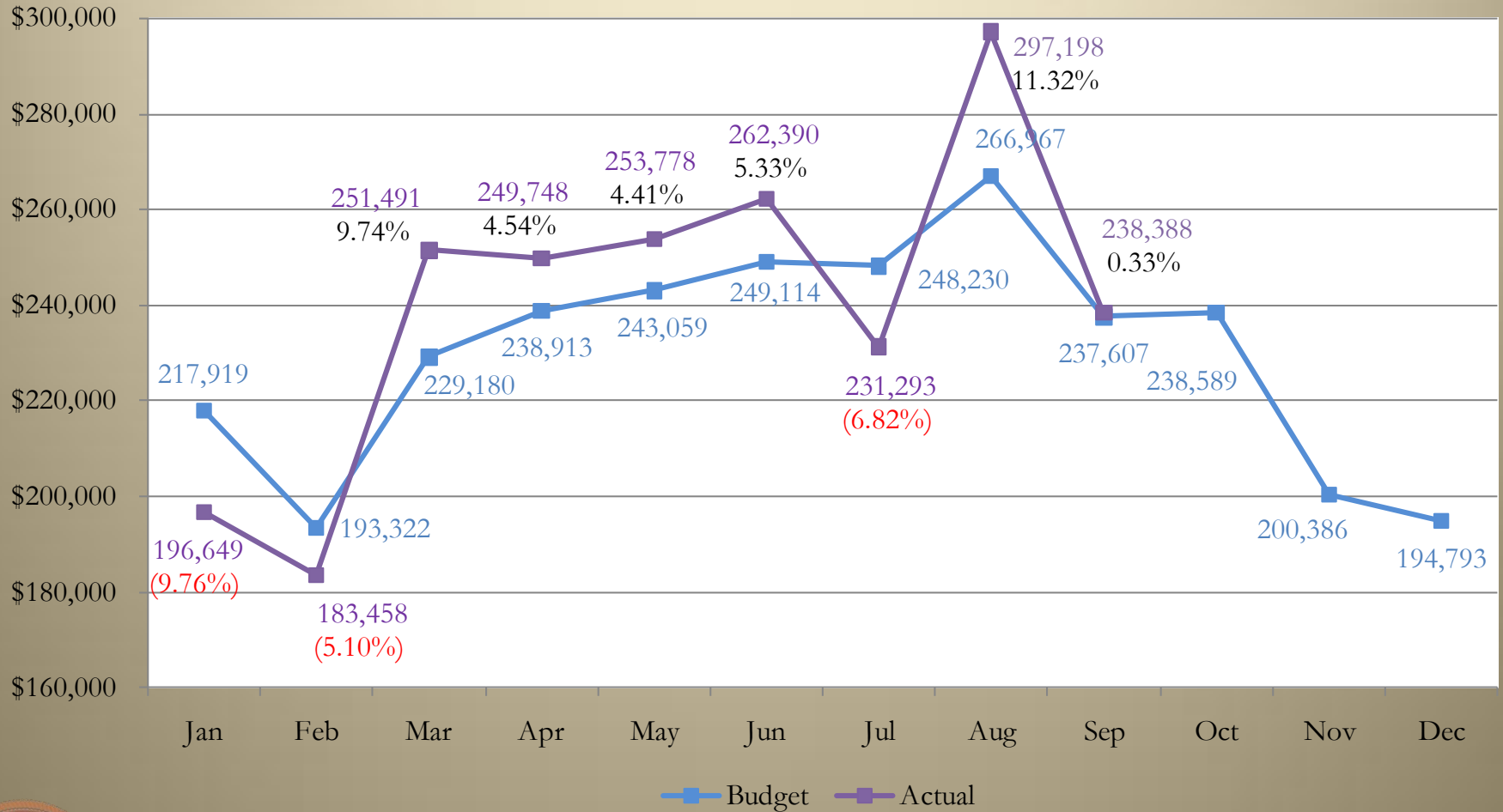
# Use Tax on Automobiles – Budget to Actual

## September 30, 2011

	Historical Percentage	Budget	Actual	\$ Chg Budget to Actual	% Chg Budget to Actual	Cumulative % Chg
January	7.90%	217,919	196,649	(21,270)	(9.76%)	(9.76%)
February	7.01%	193,322	183,458	(9,864)	(5.10%)	(7.57%)
March	8.31%	229,180	251,491	22,311	9.74%	(1.38%)
April	8.66%	238,913	249,748	10,835	4.54%	0.23%
May	8.81%	243,059	253,778	10,718	4.41%	1.13%
June	9.03%	249,114	262,390	13,276	5.33%	1.90%
July	9.00%	248,230	231,293	(16,937)	(6.82%)	0.56%
August	9.68%	266,967	297,198	30,231	11.32%	2.08%
September	8.61%	237,607	238,388	780	0.33%	1.89%
October	8.65%	238,589				
November	7.27%	200,386				
December	7.06%	194,793				
	100%	2,758,079	2,164,392	40,082		1.89%



# Use Tax on Automobiles – Budget to Actual September 30, 2011



# Historical Use Tax on Building Materials

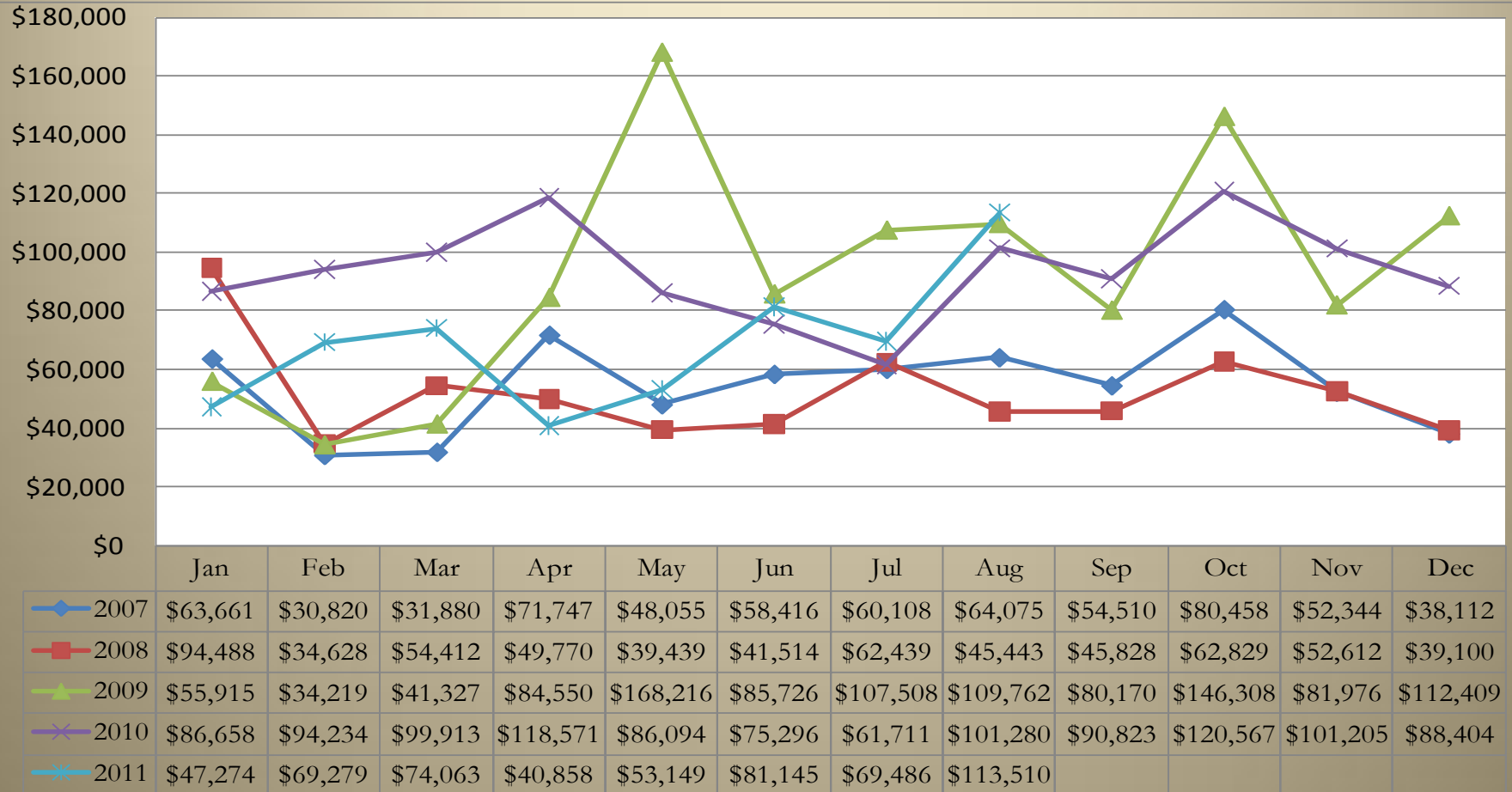
## August 31, 2011

	2007	2008	2009	2010	2011	% Chg '07 to '08	% Chg '08 to '09	% Chg '09 to '10	% Chg '10 to '11	Cumulative % Chg '07 to '11	Cumulative % Chg '10 to '11
January	63,661	94,488	55,915	86,658	47,274	48.43%	(40.82%)	54.98%	(45.45%)	(25.74%)	(45.45%)
February	30,820	34,628	34,219	94,234	69,279	12.36%	(1.18%)	175.39%	(26.48%)	23.36%	(35.57%)
March	31,880	54,412	41,327	99,913	74,063	70.68%	(24.05%)	141.76%	(25.87%)	50.85%	(32.12%)
April	71,747	49,770	84,550	118,571	40,858	(30.63%)	69.88%	40.24%	(65.54%)	16.84%	(42.04%)
May	48,055	39,439	168,216	86,094	53,149	(17.93%)	326.52%	(48.82%)	(38.27%)	15.62%	(41.37%)
June	58,416	41,514	672,453	75,296	81,145	(28.93%)	1519.80%	(88.80%)	7.77%	20.09%	(34.77%)
July	60,108	62,439	107,508	61,711	69,486	3.88%	72.18%	(42.60%)	12.60%	19.35%	(30.08%)
August	64,075	45,443	109,762	101,280	113,510	(29.08%)	141.54%	(7.73%)	12.08%	27.99%	(24.18%)
September	54,510	45,828	80,170	90,823		(15.93%)	74.94%	13.29%			
October	80,458	62,829	146,308	120,567		(21.91%)	132.86%	(17.59%)			
November	52,344	52,612	81,976	101,205		0.51%	55.81%	23.46%			
December	38,112	39,100	112,409	88,404		2.59%	187.49%	(21.35%)			
Year Total	654,185	622,505	1,694,813	1,124,758	548,764	(4.84%)	172.26%	(33.64%)	(24.18%)	27.99%	(24.18%)



# Historical Use Tax on Building Materials

## August 31, 2011



Note: June 2009 collections adjusted for industry trending, taking out large one-time payments.



# Use Tax on Building Materials – Budget to Actual

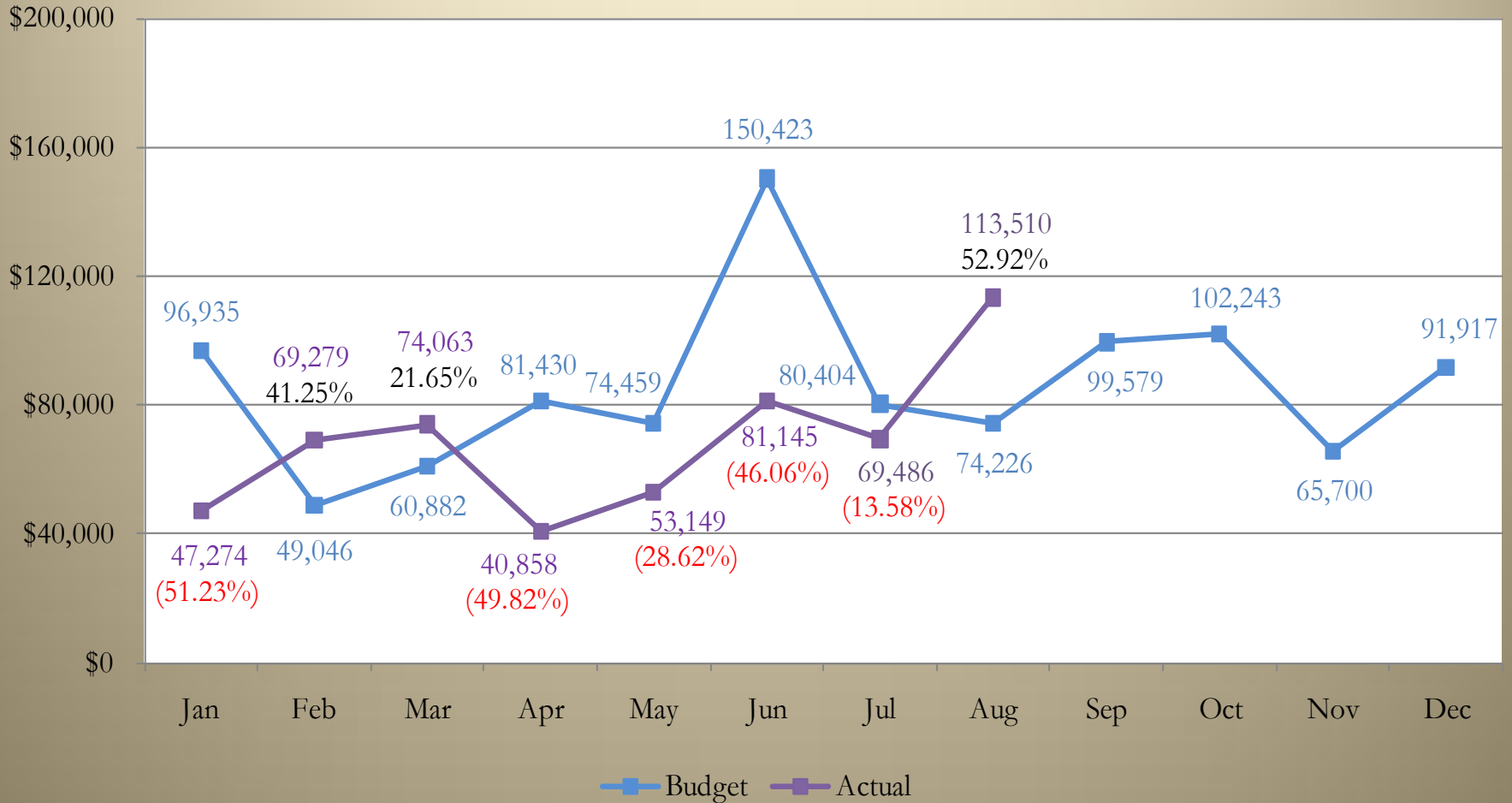
## August 31, 2011

	Historical Percentage	Budget	Actual	\$ Chg Budget to Actual	% Chg Budget to Actual	Cumulative % Chg
January	9.44%	96,935	47,274	(49,661)	(51.23%)	(51.23%)
February	4.77%	49,046	69,279	20,233	41.25%	(20.16%)
March	5.93%	60,882	74,063	13,181	21.65%	(7.85%)
April	7.93%	81,430	40,858	(40,572)	(49.82%)	(19.71%)
May	7.25%	74,459	53,149	(21,310)	(28.62%)	(21.54%)
June	14.64%	150,423	81,145	(69,277)	(46.06%)	(28.72%)
July	7.83%	80,404	69,486	(10,918)	(13.58%)	(26.67%)
August	7.23%	74,226	113,510	39,283	52.92%	(17.83%)
September	9.69%	99,579				
October	9.95%	102,243				
November	6.40%	65,700				
December	8.95%	91,917				
	<b>100%</b>	<b>1,027,244</b>	<b>548,764</b>	<b>(119,042)</b>		<b>(17.83%)</b>



# Use Tax on Building Materials – Budget to Actual

## August 31, 2011



# Historical Sales & Use Tax (all components)

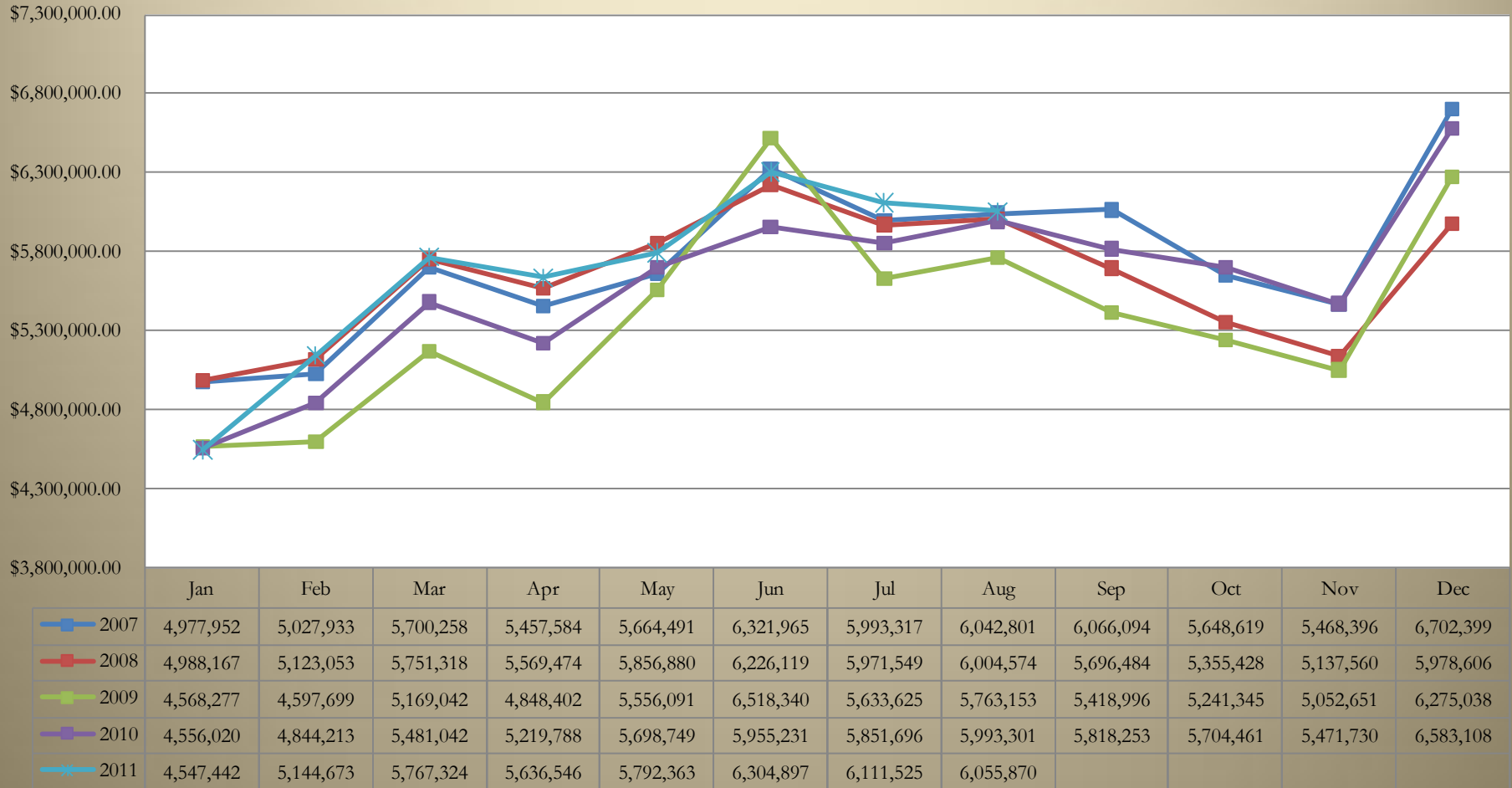
## August 31, 2011

	2007	2008	2009	2010	2011	% Chg '07 to '08	% Chg '08 to '09	% Chg '09 to '10	% Chg '10 to '11	Cumulative % Chg '07 to '11	Cumulative % Chg '10 to '11
January	4,977,952	4,988,167	4,568,277	4,556,020	4,547,442	0.21%	(8.42%)	(0.27%)	(0.19%)	(8.65%)	(0.19%)
February	5,027,933	5,123,053	4,597,699	4,844,213	5,144,673	1.89%	(10.25%)	5.36%	6.20%	(3.14%)	3.11%
March	5,700,258	5,751,318	5,169,042	5,481,042	5,767,324	0.90%	(10.12%)	6.04%	5.22%	(1.57%)	3.89%
April	5,457,584	5,569,474	4,848,402	5,219,788	5,636,546	2.05%	(12.95%)	7.66%	7.98%	(0.32%)	4.95%
May	5,664,491	5,856,880	5,556,091	5,698,749	5,792,363	3.40%	(5.14%)	2.57%	1.64%	0.22%	4.22%
June	6,321,965	6,226,119	6,518,340	5,955,231	6,304,897	(1.52%)	4.69%	(8.64%)	5.87%	0.13%	4.53%
July	5,993,317	5,971,549	5,633,625	5,851,696	6,111,525	(0.36%)	(5.66%)	3.87%	4.44%	0.41%	4.52%
August	6,042,801	6,004,574	5,763,153	5,993,301	6,055,870	(0.63%)	(4.02%)	3.99%	1.04%	0.39%	4.04%
September	6,066,094	5,696,484	5,418,996	5,818,253		(6.09%)	(4.87%)	7.37%			
October	5,648,619	5,355,428	5,241,345	5,704,461		(5.19%)	(2.13%)	8.84%			
November	5,468,396	5,137,560	5,052,651	5,471,730		(6.05%)	(1.65%)	8.29%			
December	6,702,399	5,978,606	6,275,038	6,583,108		(10.80%)	4.96%	4.91%			
Year Total	69,071,810	67,659,213	64,642,658	67,177,592	45,360,638	(2.05%)	(4.46%)	3.92%	4.04%	0.39%	4.04%



# Historical Sales & Use Tax (all components)

## August 31, 2011



# Sales & Use Tax (all components)

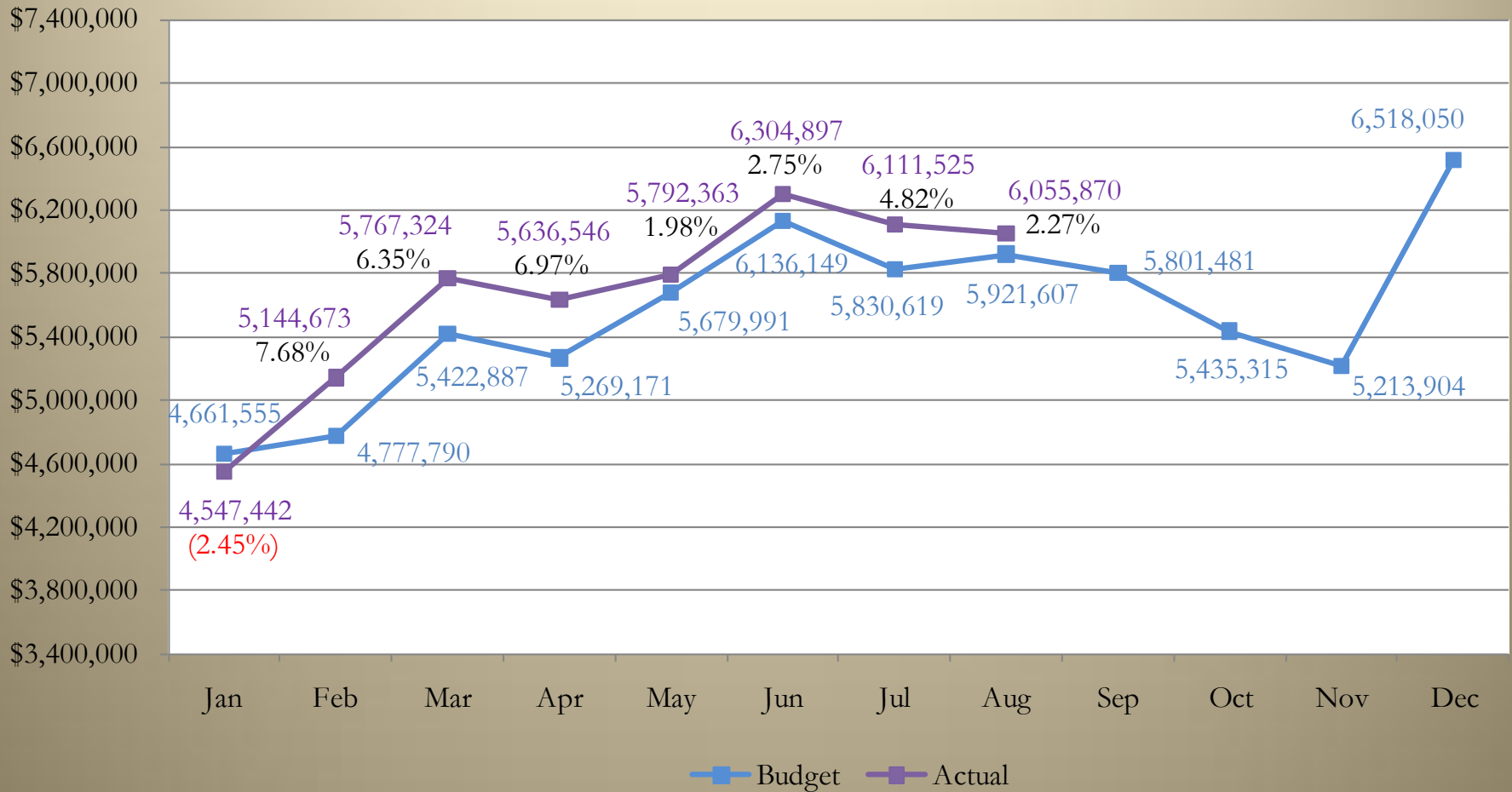
## Budget to Actual – August 2011

	Historical Percentage	Budget	Actual	\$ Chg Budget to Actual	% Chg Budget to Actual	Cumulative % Chg
January	6.99%	4,661,555	4,547,442	(114,113)	(2.45%)	(2.45%)
February	7.17%	4,777,790	5,144,673	366,882	7.68%	2.68%
March	8.13%	5,422,887	5,767,324	344,437	6.35%	4.02%
April	7.90%	5,269,171	5,636,546	367,375	6.97%	4.79%
May	8.52%	5,679,991	5,792,363	112,371	1.98%	4.17%
June	9.20%	6,136,149	6,304,897	168,748	2.75%	3.90%
July	8.75%	5,830,619	6,111,525	280,906	4.82%	4.04%
August	8.88%	5,921,607	6,055,870	134,263	2.27%	3.80%
September	8.70%	5,801,481				
October	8.15%	5,435,315				
November	7.82%	5,213,904				
December	9.78%	6,518,050				
	<b>100%</b>	<b>66,668,519</b>	<b>45,360,638</b>	<b>1,660,869</b>		<b>3.80%</b>



# Sales & Use Tax (all components)

## Budget to Actual – August 2011



# Unrestricted Funds

## August 2011



# August 2011 – Road & Bridge

	As of August 31, 2011			2011
	Budget	Actual	Variance	Budget
<b>Revenues:</b>				
Property Tax	1,199,601	1,202,579	2,978	1,224,567
Highway User Tax	6,891,839	6,994,428	102,589	10,800,000
Specific Ownership Tax	3,193,209	3,109,511	(83,698)	4,669,800
Federal Grant Projects*	131,874	131,874	0	0
Fees & Charges for Services	554,000	563,608	9,608	831,000
Other Revenue	48,333	167,034	118,701	72,500
<b>Total Revenues</b>	<b>12,018,857</b>	<b>12,169,035</b>	<b>150,178</b>	<b>17,597,867</b>
<b>Expenditures:</b>				
Personnel	7,593,357	6,526,679	1,066,678	11,390,036
Operating	5,422,824	3,915,386	1,507,438	8,134,236
Federal Projects Operating*	161,218	161,218	0	1,370,855
Capital	667,136	680,195	(13,059)	1,000,704
<b>Total Expenditures</b>	<b>13,844,535</b>	<b>11,283,478</b>	<b>2,561,056</b>	<b>21,895,831</b>
<b>Net Impact to Fund Balance</b>	<b>(1,825,678)</b>	<b>885,557</b>	<b>2,711,235</b>	<b>(4,297,964)</b>
			Beginning Fund Balance	5,687,359
			Less: Restricted Funds	(816,785)
			Budgeted Change in Fund Balance	(4,297,964)
			<b>Estimated Available Fund Balance</b>	<b>572,610</b>

\* Federal Projects are seasonal



# August 2011 – Human Services

## Human Services Fund Managerial Income Statement

	As of August 31, 2011			2011
	Budget	Actual	Variance	Budget
<b>Revenues:</b>				
Sales Tax*	7,998,064	7,998,064	0	11,997,101
Federal & State Revenue**	20,261,070	20,011,941	(249,129)	36,887,574
Senior Center	134,936	134,936	0	202,400
Donations/Miscellaneous	0	0	0	5,000
<b>Total Revenues</b>	<b>28,394,070</b>	<b>28,144,941</b>	<b>(249,129)</b>	<b>49,092,075</b>
<b>Expenditures:</b>				
Personnel	13,126,360	14,078,351	(951,991)	21,008,178
Operating	16,010,269	16,233,433	(223,164)	26,445,940
Capital	0	0	0	0
Transfers to Retirement	1,091,971	723,237	368,734	1,637,957
<b>Total Expenditures</b>	<b>30,228,601</b>	<b>31,035,022</b>	<b>(806,420)</b>	<b>49,092,075</b>
<b>Net Impact to Fund Balance</b>	<b>(1,834,531)</b>	<b>(2,890,081)</b>	<b>(1,055,550)</b>	<b>0</b>
			Beginning Fund Balance	334,067
			Budgeted Change in Fund Balance	0
			<b>Estimated Available Fund Balance</b>	<b>334,067</b>

\* Per resolution distribution amount

\*\* Based on two year historical revenue

Beginning Fund Balance 334,067  
 Budgeted Change in Fund Balance 0  
**Estimated Available Fund Balance 334,067**





# August 2011 – Community Investment

	As of August 31, 2011			2011
	Budget	Actual	Variance	Budget
<b>Revenues:</b>				
Property Tax*	9,919,756	9,943,682	23,925	10,126,204
Restricted Revenue	1,145,868	1,145,868	0	3,553,235
<b>Total Revenues</b>	<b>11,065,625</b>	<b>11,089,550</b>	<b>23,925</b>	<b>13,679,439</b>
<b>Expenditures:</b>				
Principal	1,300,000	1,140,297	159,703	5,710,000
Interest and Other costs	4,087,722	3,992,610	95,112	7,273,575
Tax Collection Expenses/Fees	169,891	160,458	9,433	173,427
Strategic Moves	1,212,526	1,212,526	0	2,372,602
<b>Total Expenditures</b>	<b>6,770,139</b>	<b>6,505,891</b>	<b>264,248</b>	<b>15,529,604</b>
<b>Net Impact to Fund Balance</b>	<b>4,295,486</b>	<b>4,583,659</b>	<b>288,174</b>	<b>(1,850,165)</b>
				Beginning Fund Balance
				2,370,628
				Budgeted Change in Fund Balance
				(1,850,165)
				<b>Estimated Available Fund Balance</b>
				<b>520,463</b>

\* Based on three year historical revenue



# August 2011 – Retirement

	As of August 31, 2011			2011
	Budget	Actual	Variance	Budget
<b>Revenues:</b>				
Property Tax	5,214,616	5,225,967	11,351	5,323,141
Internal Direct Bills	1,565,032	849,659	(715,373)	2,347,552
<b>Total Revenues</b>	<b>6,779,648</b>	<b>6,075,626</b>	<b>(704,022)</b>	<b>7,670,693</b>
<b>Expenditures:</b>				
Personnel	5,131,645	4,550,961	580,684	7,697,467
Tax Collection Expenses/Fees	79,010	78,709	301	80,654
<b>Total Expenditures</b>	<b>5,210,654</b>	<b>4,629,670</b>	<b>580,984</b>	<b>7,778,121</b>
<b>Net Impact to Fund Balance</b>	<b>1,568,993</b>	<b>1,445,956</b>	<b>(123,038)</b>	<b>(107,428)</b>
		Beginning Fund Balance		1,094,878
		Less: Cash Flow		(623,000)
		Budgeted Change in Fund Balance		(107,428)
		<b>Estimated Available Fund Balance</b>		<b>364,450</b>



# August 2011 – General Fund (Unrestricted)

<b>Revenues:</b>	<b>As of August 31, 2011</b>			<b>2011</b>
	<b>Budget</b>	<b>Actual</b>	<b>Variance</b>	<b>Budget</b>
Property Tax	28,024,330	29,217,094	1,192,764	28,647,063
Sales and Use Tax	28,280,377	29,941,246	1,660,869	43,539,431
Other Taxes	109,569	175,074	65,505	162,000
Intergovernmental	969,157	932,266	(36,891)	2,316,894
Fees & Charges for Services	105,405	216,614	111,209	175,529
Traffic Fines	437,640	289,106	(148,534)	700,000
Assessor Fees	35,872	29,591	(6,281)	40,000
Clerk & Recorder Fees	5,233,831	5,210,678	(23,153)	8,855,100
Coroner Fees	171,491	202,230	30,739	380,500
Sheriff Fees	453,069	742,362	289,293	853,077
Treasurer Fees	2,927,100	2,866,847	(60,253)	3,300,000
Public Trustee Fees	0	0	0	851,031
Park & Recreation Fees	380,630	446,838	66,208	456,500
Parking Fees	173,580	179,248	5,668	263,000
Interest on Investments	166,667	109,101	(57,565)	250,000
Rent Collections	62,780	70,786	8,006	108,860
Internal Direct Bills	85,852	557,839	471,987	128,778
Miscellaneous Revenue	5,746	34,058	28,312	15,750
<b>Total Revenues</b>	<b>67,623,095</b>	<b>71,220,978</b>	<b>3,597,883</b>	<b>91,043,513</b>



# August 2011 – General Fund (Unrestricted)

	As of August 31, 2011			2011
	Budget	Actual	Variance	Budget
<b>Total Revenues</b>	<b>67,623,095</b>	<b>71,220,978</b>	<b>3,597,883</b>	<b>91,043,513</b>
<b><u>Expenditures:</u></b>				
Personnel	48,659,637	48,516,084	143,553	68,675,240
Other Operating	17,876,180	15,985,300	1,890,879	27,358,708
Capital	833,486	833,486	0	2,061,689
Transfers Out	34,157	174,931	(140,774)	51,235
<b>Total Expenditures</b>	<b>67,403,460</b>	<b>65,509,801</b>	<b>1,893,659</b>	<b>98,146,872</b>
<b>Net Impact to Fund Balance</b>	<b>219,635</b>	<b>5,711,177</b>	<b>5,491,542</b>	<b>(7,103,359)</b>
				<b>28,559,538</b>
				<b>(7,103,359)</b>
				<b>(2,893,346)</b>
				<b>(2,500,000)</b>
				<b>(1,551,779)</b>
				<b>(14,511,054)</b>
				<b>0</b>

**Estimated Available Fund Balance**

**0**



# Questions?

