



2011 Sales Tax Collections As of September 30, 2011

Nicola Sapp
County Budget Officer
November 17, 2011
Attachment A

Sales and Use Tax Collections

2011 Budget by Industry

Tax Type	Industry Codes	2011 Budget	% of Budget
Sales Tax	Retail Trade	\$ 35,382,864	53.07%
Sales Tax	Food Services	7,694,682	11.54%
Sales Tax	Information (Magazines, News Papers, Etc)	4,639,412	6.96%
Sales Tax	Wholesale Trade	2,869,349	4.30%
Sales Tax	Accommodations	2,571,508	3.86%
Sales Tax	Real Estate and Rental and Leasing	1,879,940	2.82%
Sales Tax	Manufacturing	1,696,548	2.54%
Sales Tax	Utilities	1,586,746	2.38%
Sales Tax	Other Services (except Public Admin)	1,480,291	2.22%
Sales Tax	Construction	764,313	1.15%
Sales Tax	Professional, Scientific, and Technical Services	613,411	0.92%
Sales Tax	Finance and Insurance	419,918	0.63%
Sales Tax	Arts, Entertainment, and Recreation	316,507	0.47%
Sales Tax	Waste Management and Remediation Services	244,086	0.37%
Sales Tax	Mining	180,485	0.27%
Sales Tax	Educational Services	148,369	0.22%
Sales Tax	Health Care and Social Assistance	113,756	0.17%
Sales Tax	Transportation and Warehousing	87,299	0.13%
Sales Tax	Agriculture, Forestry, Fishing and Hunting	69,793	0.10%
Sales Tax	Public Administration	36,248	0.05%
Sales Tax	NAICS Not Specified	87,671	0.13%
	Sales Tax Total	\$ 62,883,196	94.32%
Use Tax	Building Materials	1,027,244	1.54%
Use Tax	Automobiles	2,758,079	4.14%
	Use Tax Total	\$ 3,785,323	5.68%
	Grand Total	\$ 66,668,519	100.00%



Retail

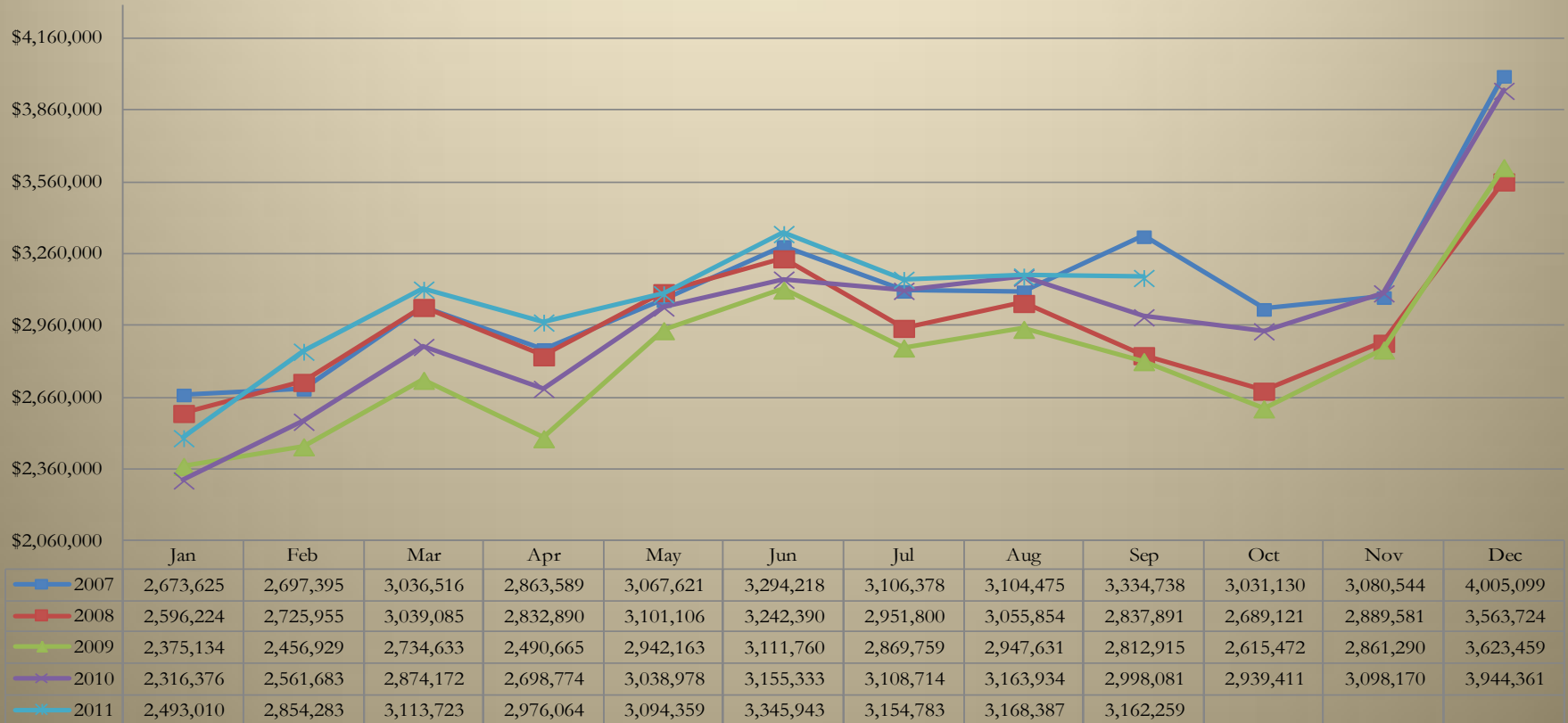
5 year Historical Comparison As of September 30, 2011

	2007	2008	2009	2010	2011	% Chg '07 to '08	% Chg '08 to '09	% Chg '09 to '10	% Chg '10 to '11	Cumulative % Chg '07 to '11	Cumulative % Chg '10 to '11
January	2,673,625	2,596,224	2,375,134	2,316,376	2,493,010	(2.90%)	(8.52%)	(2.47%)	7.63%	(6.76%)	7.63%
February	2,697,395	2,725,955	2,456,929	2,561,683	2,854,283	1.06%	(9.87%)	4.26%	11.42%	(0.44%)	9.62%
March	3,036,516	3,039,085	2,734,633	2,874,172	3,113,723	0.08%	(10.02%)	5.10%	8.33%	0.64%	9.14%
April	2,863,589	2,832,890	2,490,665	2,698,774	2,976,064	(1.07%)	(12.08%)	8.36%	10.27%	1.47%	9.44%
May	3,067,621	3,101,106	2,942,163	3,038,978	3,094,359	1.09%	(5.13%)	3.29%	1.82%	1.34%	7.72%
June	3,294,218	3,242,390	3,111,760	3,155,333	3,345,943	(1.57%)	(4.03%)	1.40%	6.04%	1.39%	7.40%
July	3,106,378	2,951,800	2,869,759	3,108,714	3,154,783	(4.98%)	(2.78%)	8.33%	1.48%	1.41%	6.47%
August	3,104,475	3,055,854	2,947,631	3,163,934	3,168,387	(1.57%)	(3.54%)	7.34%	0.14%	1.50%	5.60%
September	3,334,738	2,837,891	2,812,915	2,998,081	3,162,259	(14.90%)	(0.88%)	6.58%	5.48%	0.68%	5.58%
October	3,031,130	2,689,121	2,615,472	2,939,411		(11.28%)	(2.74%)	12.39%			
November	3,080,544	2,889,581	2,861,290	3,098,170		(6.20%)	(0.98%)	8.28%			
December	4,005,099	3,563,724	3,623,459	3,944,361		(11.02%)	1.68%	8.86%			
Year Total	37,295,328	35,525,621	33,841,812	35,897,986	27,362,811	(4.75%)	(4.74%)	6.08%	5.58%	0.68%	5.58%



Retail

5 year Historical Comparison As of September 30, 2011



Retail

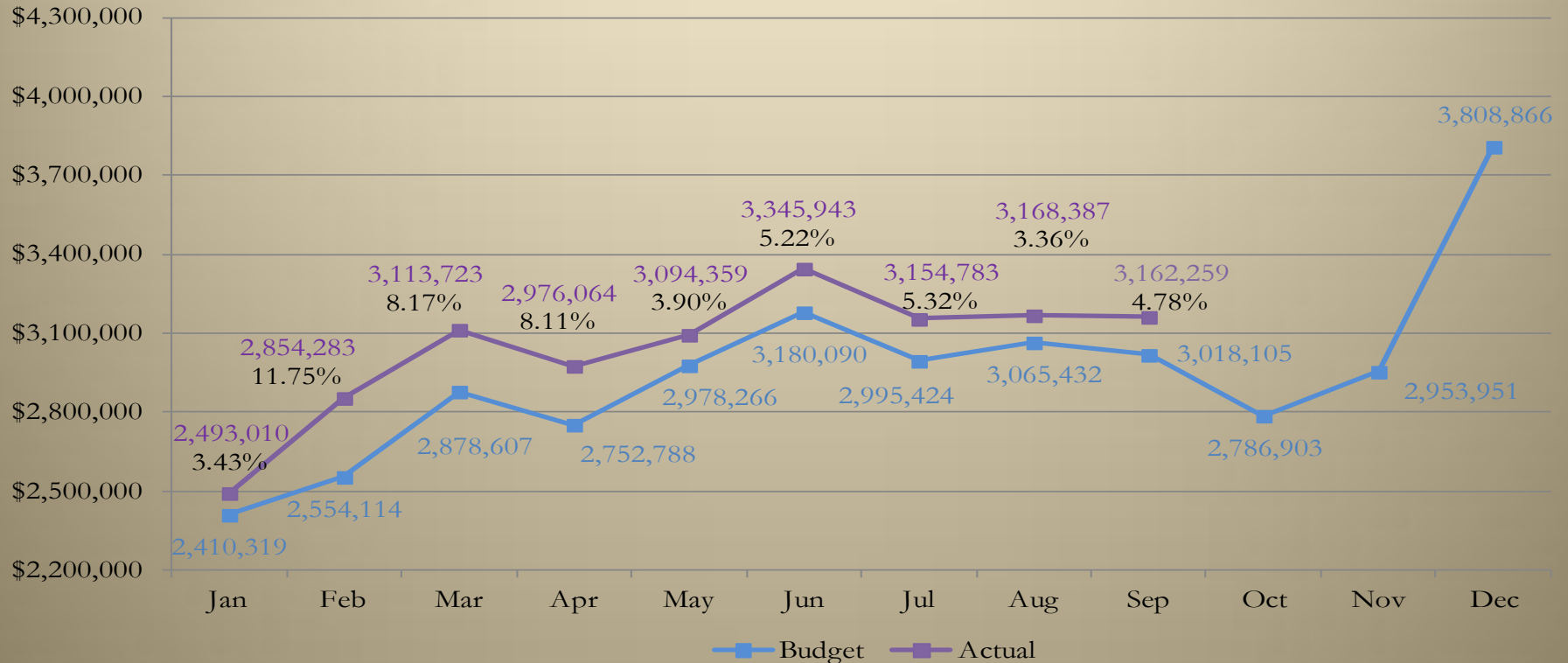
Comparison of Budget to Actual As of September 30, 2011

	Historical Percentage	Budget	Actual	\$ Chg Budget to Actual	% Chg Budget to Actual	Cumulative % Chg
January	6.81%	2,410,319	2,493,010	82,691	3.43%	3.43%
February	7.22%	2,554,114	2,854,283	300,169	11.75%	7.71%
March	8.14%	2,878,607	3,113,723	235,116	8.17%	7.88%
April	7.78%	2,752,788	2,976,064	223,276	8.11%	7.94%
May	8.42%	2,978,266	3,094,359	116,093	3.90%	7.05%
June	8.99%	3,180,090	3,345,943	165,853	5.22%	6.70%
July	8.47%	2,995,424	3,154,783	159,359	5.32%	6.49%
August	8.66%	3,065,432	3,168,387	102,955	3.36%	6.07%
September	8.53%	3,018,105	3,162,259	144,155	4.78%	5.92%
October	7.88%	2,786,903				
November	8.35%	2,953,951				
December	10.76%	3,808,866				
	100%	35,382,864	27,362,811	1,529,667		5.92%



Retail

Comparison of Budget to Actual As of September 30, 2011



Food Services

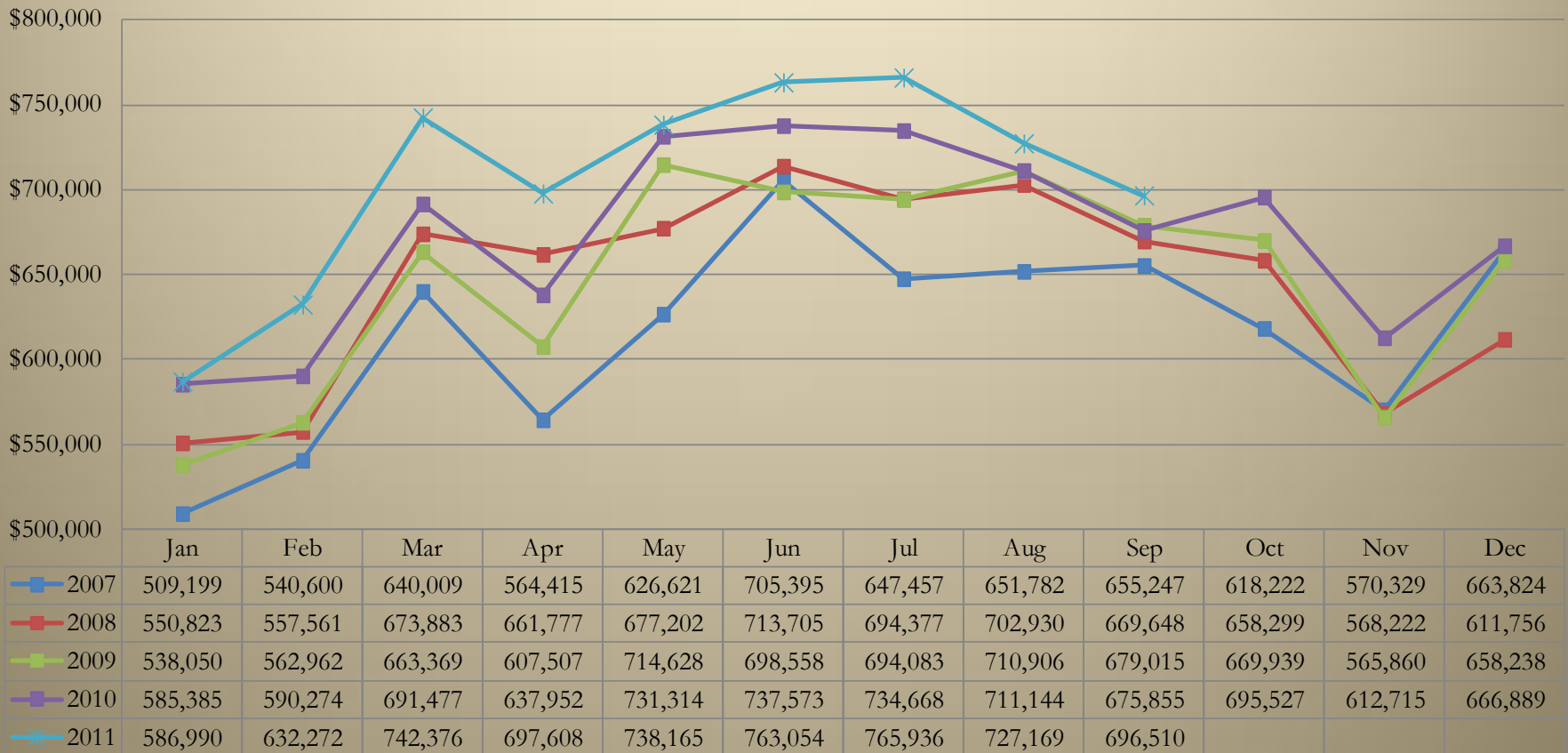
5 year Historical Comparison As of September 30, 2011

	2007	2008	2009	2010	2011	% Chg '07 to '08	% Chg '08 to '09	% Chg '09 to '10	% Chg '10 to '11	Cumulative % Chg '07 to '11	Cumulative % Chg '10 to '11
January	509,199	550,823	538,050	585,385	586,990	8.17%	(2.32%)	8.80%	0.27%	15.28%	0.27%
February	540,600	557,561	562,962	590,274	632,272	3.14%	0.97%	4.85%	7.12%	16.14%	3.71%
March	640,009	673,883	663,369	691,477	742,376	5.29%	(1.56%)	4.24%	7.36%	16.09%	5.06%
April	564,415	661,777	607,507	637,952	697,608	17.25%	(8.20%)	5.01%	9.35%	17.97%	6.15%
May	626,621	677,202	714,628	731,314	738,165	8.07%	5.53%	2.33%	0.94%	17.93%	4.97%
June	705,395	713,705	698,558	737,573	763,054	1.18%	(2.12%)	5.59%	3.45%	16.01%	4.69%
July	647,457	694,377	694,083	734,668	765,936	7.25%	(0.04%)	5.85%	4.26%	16.36%	4.62%
August	651,782	702,930	710,906	711,144	727,169	7.85%	1.13%	0.03%	2.25%	15.72%	4.31%
September	655,247	669,648	679,015	675,855	696,510	2.20%	1.40%	(0.47%)	3.06%	14.61%	4.17%
October	618,222	658,299	669,939	695,527		6.48%	1.77%	3.82%			
November	570,329	568,222	565,860	612,715		(0.37%)	(0.42%)	8.28%			
December	663,824	611,756	658,238	666,889		(7.84%)	7.60%	1.31%			
Year Total	7,393,100	7,740,184	7,763,114	8,070,771	6,350,081	4.69%	0.30%	3.96%	4.17%	14.61%	4.17%



Food Services

5 year Historical Comparison As of September 30, 2011



Food Services

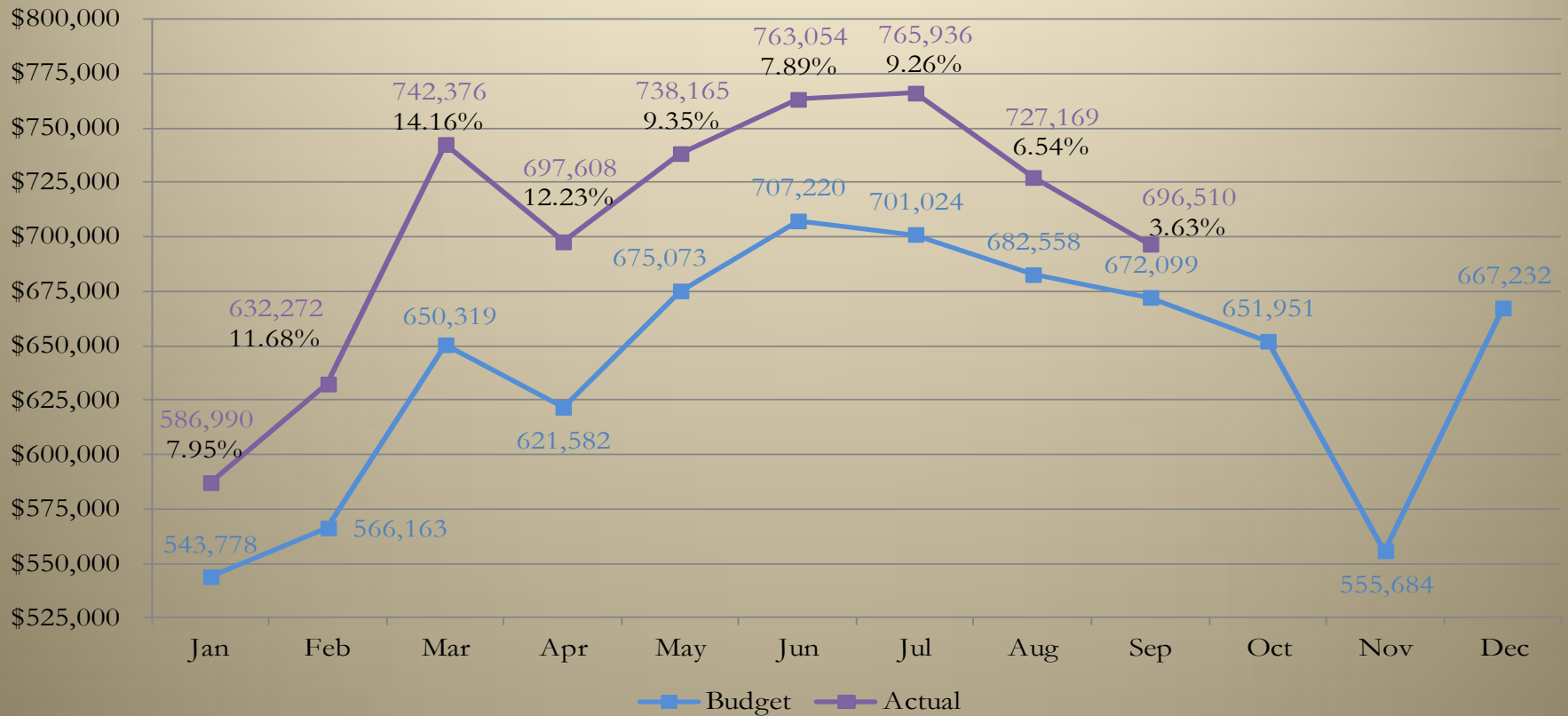
Comparison of Budget to Actual As of September 30, 2011

	Historical Percentage	Budget	Actual	\$ Chg Budget to Actual	% Chg Budget to Actual	Cumulative % Chg
January	7.07%	543,778	586,990	43,212	7.95%	7.95%
February	7.36%	566,163	632,272	66,109	11.68%	9.85%
March	8.45%	650,319	742,376	92,057	14.16%	11.44%
April	8.08%	621,582	697,608	76,026	12.23%	11.65%
May	8.77%	675,073	738,165	63,092	9.35%	11.14%
June	9.19%	707,220	763,054	55,835	7.89%	10.53%
July	9.11%	701,024	765,936	64,912	9.26%	10.33%
August	8.87%	682,558	727,169	44,612	6.54%	9.83%
September	8.73%	672,099	696,510	24,411	3.63%	9.11%
October	8.47%	651,951				
November	7.22%	555,684				
December	8.67%	667,232				
	100%	7,694,682	6,350,081	530,266		9.11%



Food Services

Comparison of Budget to Actual As of September 30, 2011



Information (Magazines, Newspapers, Etc.)

5 year Historical Comparison

As of September 30, 2011

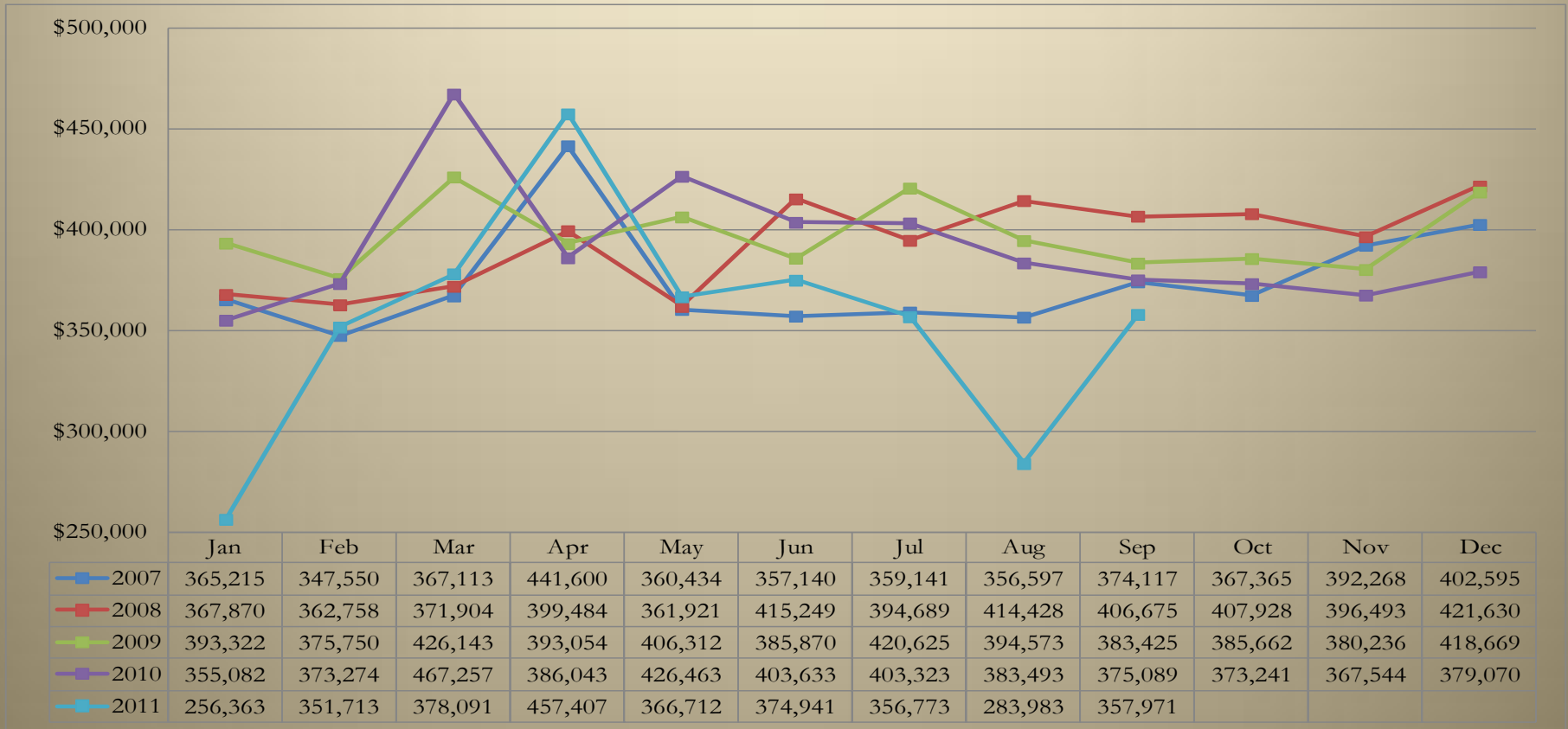
	2007	2008	2009	2010	2011	% Chg '07 to '08	% Chg '08 to '09	% Chg '09 to '10	% Chg '10 to '11	Cumulative % Chg '07 to '11	Cumulative % Chg '10 to '11
January	365,215	367,870	393,322	355,082	256,363	0.73%	6.92%	(9.72%)	(27.80%)	(29.80%)	(27.80%)
February	347,550	362,758	375,750	373,274	351,713	4.38%	3.58%	(0.66%)	(5.78%)	(14.69%)	(16.51%)
March	367,113	371,904	426,143	467,257	378,091	1.30%	14.58%	9.65%	(19.08%)	(8.68%)	(17.52%)
April	441,600	399,484	393,054	386,043	457,407	(9.54%)	(1.61%)	(1.78%)	18.49%	(5.12%)	(8.73%)
May	360,434	361,921	406,312	426,463	366,712	0.41%	12.27%	4.96%	(14.01%)	(3.81%)	(9.85%)
June	357,140	415,249	385,870	403,633	374,941	16.27%	(7.08%)	4.60%	(7.11%)	(2.40%)	(9.39%)
July	359,141	394,689	420,625	403,323	356,773	9.90%	6.57%	(4.11%)	(11.54%)	(2.16%)	(9.70%)
August	356,597	414,428	394,573	383,493	283,983	16.22%	(4.79%)	(2.81%)	(25.95%)	(4.36%)	(11.65%)
September	374,117	406,675	383,425	375,089	357,971	8.70%	(5.72%)	(2.17%)	(4.56%)	(4.35%)	(10.90%)
October	367,365	407,928	385,662	373,241		11.04%	(5.46%)	(3.22%)			
November	392,268	396,493	380,236	367,544		1.08%	(4.10%)	(3.34%)			
December	402,595	421,630	418,669	379,070		4.73%	(0.70%)	(9.46%)			
Year Total	4,491,136	4,721,029	4,763,640	4,693,512	3,183,953	5.12%	0.90%	(1.47%)	(10.90%)	(4.35%)	(10.90%)



Information (Magazines, Newspapers, Etc.)

5 year Historical Comparison

As of September 30, 2011



Information (Magazines, Newspapers, Etc.)

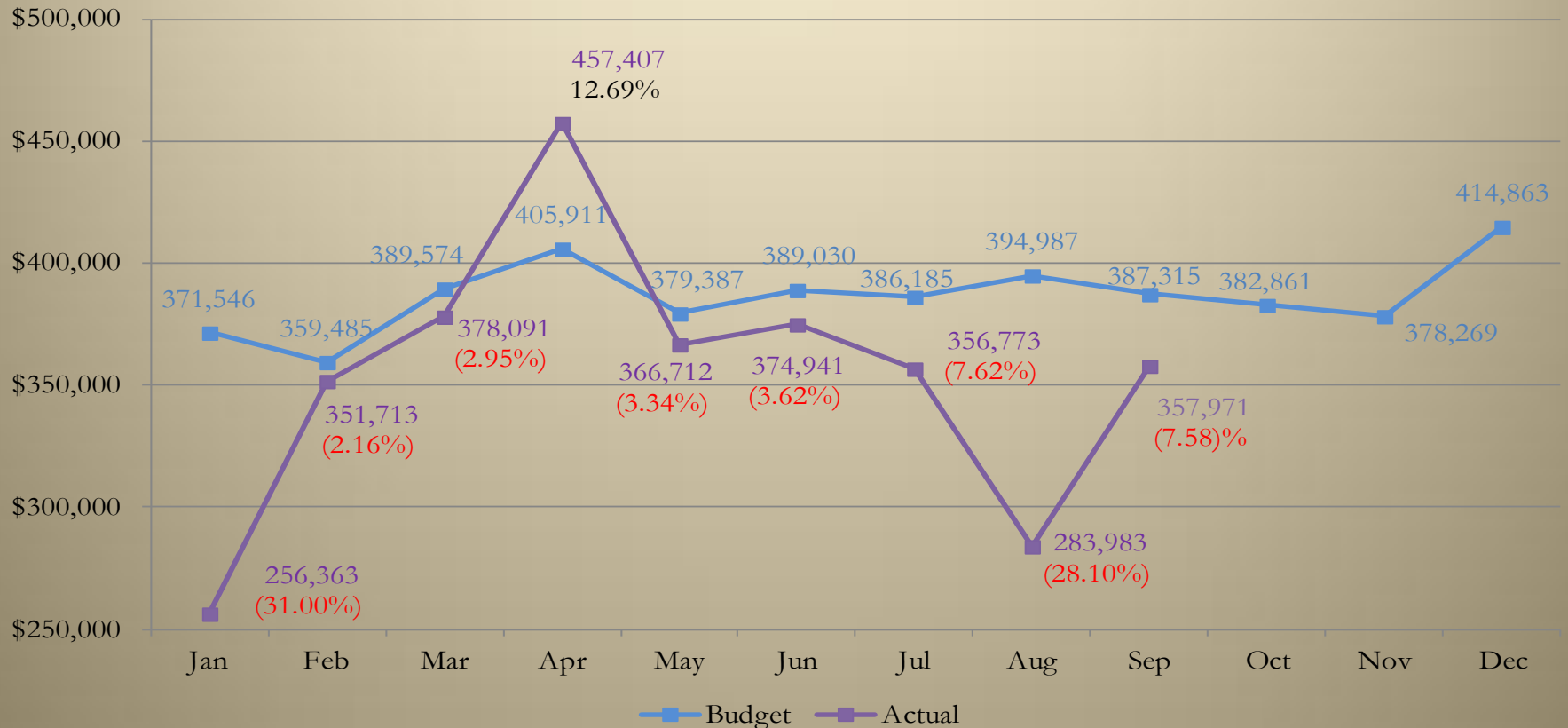
Comparison of Budget to Actual As of September 30, 2011

	Historical Percentage	Budget	Actual	\$ Chg Budget to Actual	% Chg Budget to Actual	Cumulative % Chg
January	8.01%	371,546	256,363	(115,183)	(31.00%)	(31.00%)
February	7.75%	359,485	351,713	(7,772)	(2.16%)	(16.82%)
March	8.40%	389,574	378,091	(11,483)	(2.95%)	(12.00%)
April	8.75%	405,911	457,407	51,496	12.69%	(5.43%)
May	8.18%	379,387	366,712	(12,675)	(3.34%)	(5.02%)
June	8.39%	389,030	374,941	(14,089)	(3.62%)	(4.78%)
July	8.32%	386,185	356,773	(29,412)	(7.62%)	(5.19%)
August	8.51%	394,987	283,983	(111,004)	(28.10%)	(8.13%)
September	8.35%	387,315	357,971	(29,344)	(7.58%)	(8.07%)
October	8.25%	382,861				
November	8.15%	378,269				
December	8.94%	414,863				
	100%	4,639,412	3,183,953	(279,466)		(8.07%)



Information (Magazines, Newspapers, Etc.)

Comparison of Budget to Actual As of September 30, 2011



Wholesale Trade

5 year Historical Comparison

As of September 30, 2011

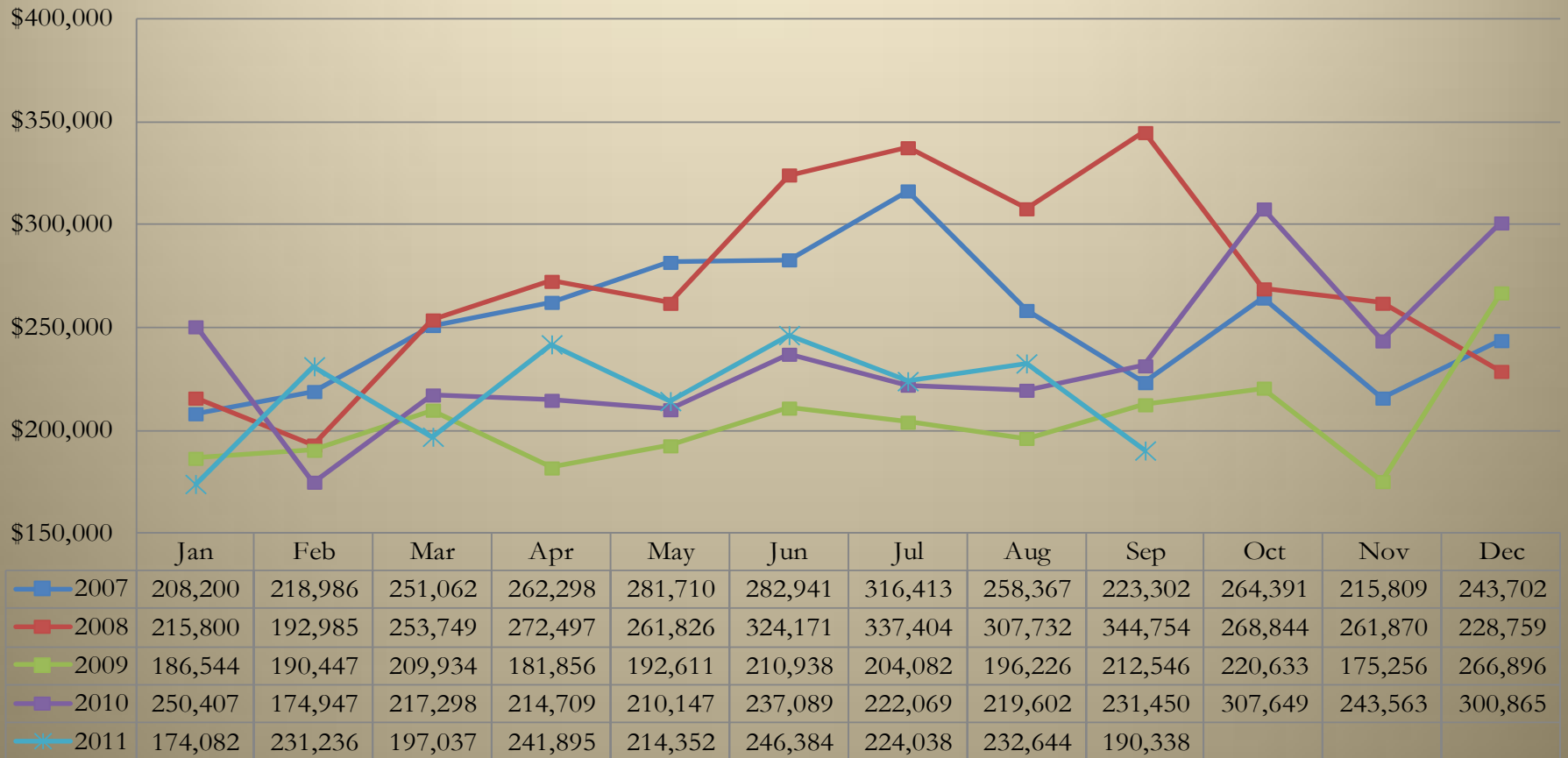
	2007	2008	2009	2010	2011	% Chg '07 to '08	% Chg '08 to '09	% Chg '09 to '10	% Chg '10 to '11	Cumulative % Chg '07 to '11	Cumulative % Chg '10 to '11
January	208,200	215,800	186,544	250,407	174,082	3.65%	(13.56%)	34.24%	(30.48%)	(16.39%)	(30.48%)
February	218,986	192,985	190,447	174,947	231,236	(11.87%)	(1.32%)	(8.14%)	32.18%	(5.12%)	(4.71%)
March	251,062	253,749	209,934	217,298	197,037	1.07%	(17.27%)	3.51%	(9.32%)	(11.19%)	(6.27%)
April	262,298	272,497	181,856	214,709	241,895	3.89%	(33.26%)	18.07%	12.66%	(10.24%)	(1.53%)
May	281,710	261,826	192,611	210,147	214,352	(7.06%)	(26.44%)	9.10%	2.00%	(13.39%)	(0.83%)
June	282,941	324,171	210,938	237,089	246,384	14.57%	(34.93%)	12.40%	3.92%	(13.30%)	0.03%
July	316,413	337,404	204,082	222,069	224,038	6.63%	(39.51%)	8.81%	0.89%	(16.06%)	0.15%
August	258,367	307,732	196,226	219,602	232,644	19.11%	(36.23%)	11.91%	5.94%	(15.30%)	0.88%
September	223,302	344,754	212,546	231,450	190,338	54.39%	(38.35%)	8.89%	(17.76%)	(15.25%)	(1.30%)
October	264,391	268,844	220,633	307,649		1.68%	(17.93%)	39.44%			
November	215,809	261,870	175,256	243,563		21.34%	(33.08%)	38.98%			
December	243,702	228,759	266,896	300,865		(6.13%)	16.67%	12.73%			
Year Total	3,027,182	3,270,391	2,447,969	2,829,795	1,952,007	8.03%	(25.15%)	15.60%	(1.30%)	(15.25%)	(1.30%)



Wholesale Trade

5 year Historical Comparison

As of September 30, 2011



Wholesale Trade

Comparison of Budget to Actual As of September 30, 2011

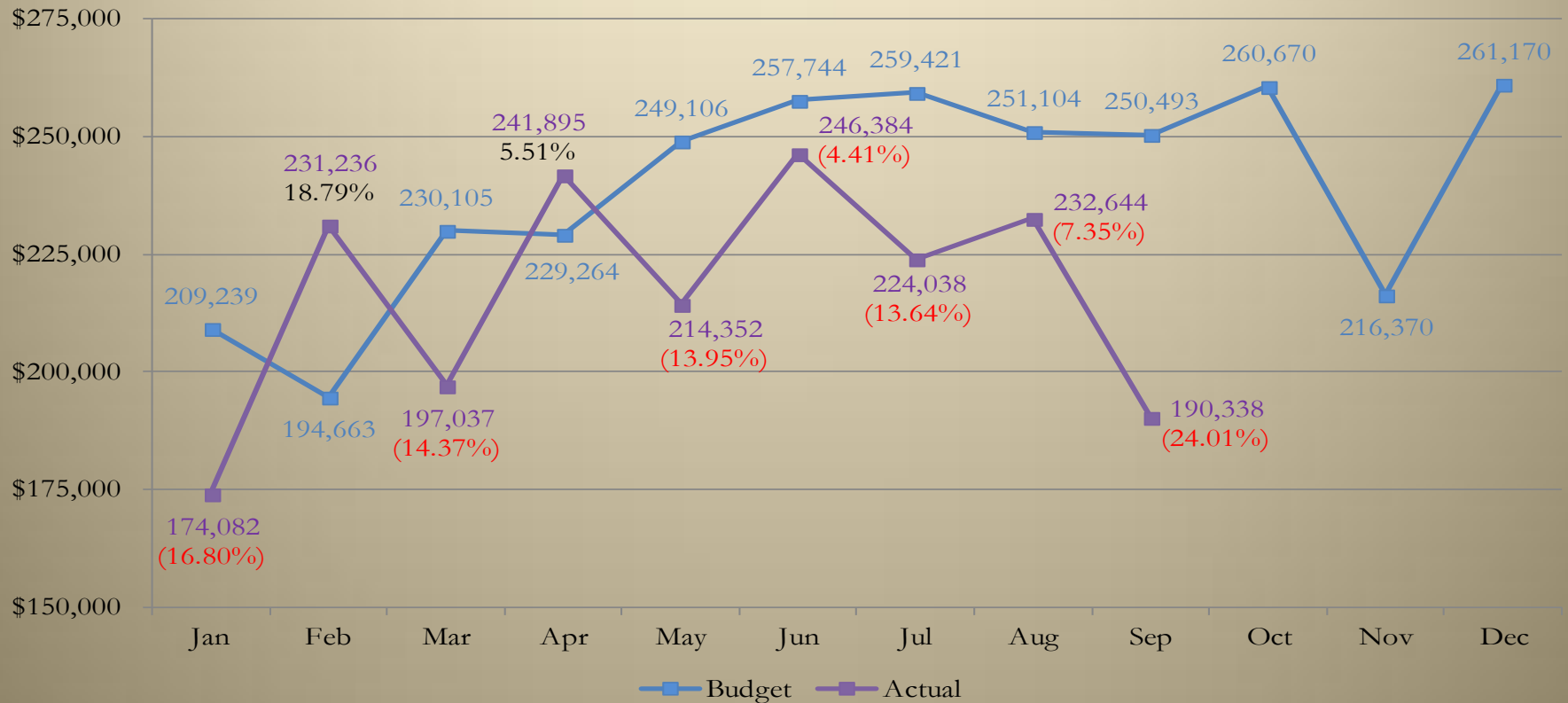
	Historical Percentage	Budget	Actual	\$ Chg Budget to Actual	% Chg Budget to Actual	Cumulative % Chg '10 to '11
January	7.29%	209,239	174,082	(35,157)	(16.80%)	(16.80%)
February	6.78%	194,663	231,236	36,573	18.79%	0.35%
March	8.02%	230,105	197,037	(33,068)	(14.37%)	(4.99%)
April	7.99%	229,264	241,895	12,631	5.51%	(2.20%)
May	8.68%	249,106	214,352	(34,754)	(13.95%)	(4.83%)
June	8.98%	257,744	246,384	(11,360)	(4.41%)	(4.75%)
July	9.04%	259,421	224,038	(35,384)	(13.64%)	(6.17%)
August	8.75%	251,104	232,644	(18,460)	(7.35%)	(6.33%)
September	8.73%	250,493	190,338	(60,154)	(24.01%)	(8.41%)
October	9.08%	260,670				
November	7.54%	216,370				
December	9.10%	261,170				
	100%	2,869,349	1,952,007	(179,133)		(8.41%)



Wholesale Trade

Comparison of Budget to Actual

As of September 30, 2011



Accommodations

5 year Historical Comparison

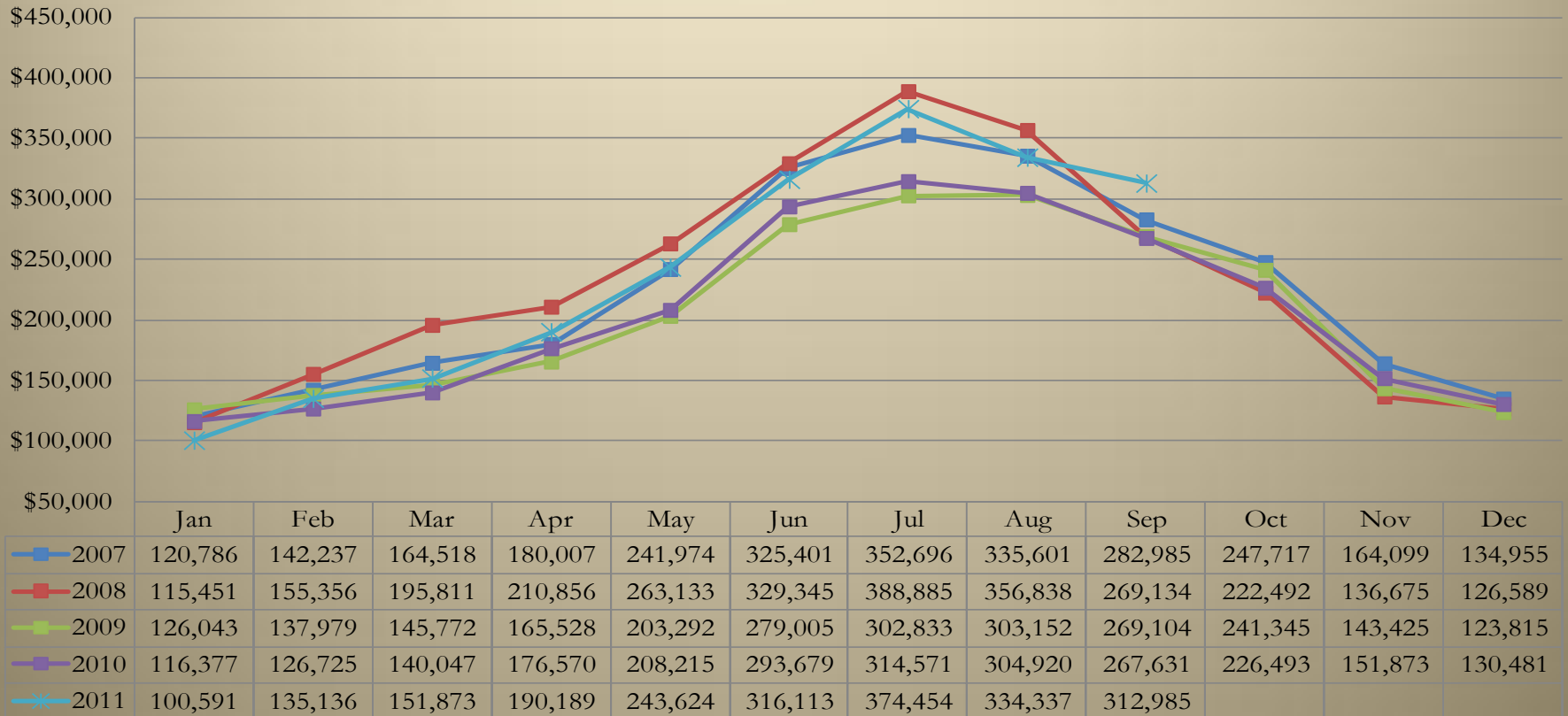
As of September 30, 2011

	2007	2008	2009	2010	2011	% Chg '07 to '08	% Chg '08 to '09	% Chg '09 to '10	% Chg '10 to '11	Cumulative % Chg '07 to '11	Cumulative % Chg '10 to '11
January	120,786	115,451	126,043	116,377	100,591	(4.42%)	9.17%	(7.67%)	(13.56%)	(16.72%)	(13.56%)
February	142,237	155,356	137,979	126,725	135,136	9.22%	(11.19%)	(8.16%)	6.64%	(10.38%)	(3.03%)
March	164,518	195,811	145,772	140,047	151,873	19.02%	(25.55%)	(3.93%)	8.44%	(9.34%)	1.16%
April	180,007	210,856	165,528	176,570	190,189	17.14%	(21.50%)	6.67%	7.71%	(4.90%)	3.23%
May	241,974	263,133	203,292	208,215	243,624	8.74%	(22.74%)	2.42%	17.01%	(3.31%)	6.96%
June	325,401	329,345	279,005	293,679	316,113	1.21%	(15.28%)	5.26%	7.64%	(3.18%)	7.15%
July	352,696	388,885	302,833	314,571	374,454	10.26%	(22.13%)	3.88%	19.04%	(1.02%)	9.87%
August	335,601	356,838	303,152	304,920	334,337	6.33%	(15.05%)	0.58%	9.65%	(0.91%)	9.83%
September	282,985	269,134	269,104	267,631	312,985	(4.89%)	(0.01%)	(0.55%)	16.95%	0.61%	10.81%
October	247,717	222,492	241,345	226,493		(10.18%)	8.47%	(6.15%)			
November	164,099	136,675	143,425	151,873		(16.71%)	4.94%	5.89%			
December	134,955	126,589	123,815	130,481		(6.20%)	(2.19%)	5.38%			
Year Total	2,692,975	2,770,566	2,441,293	2,457,583	2,159,303	2.88%	(11.88%)	0.67%	10.81%	0.61%	10.81%



Accommodations

5 year Historical Comparison As of September 30, 2011



Accommodations

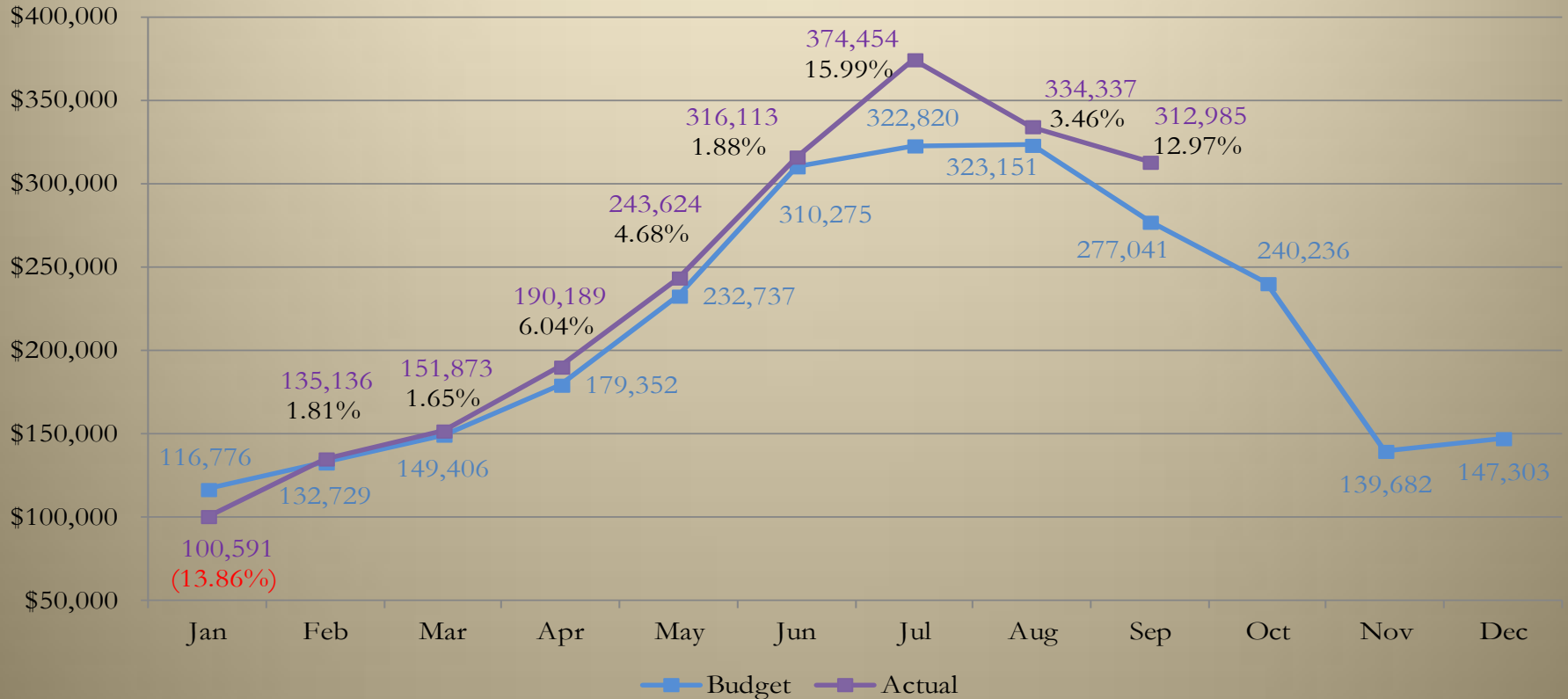
Comparison of Budget to Actual As of September 30, 2011

	Historical Percentage	Budget	Actual	\$ Chg Budget to Actual	% Chg Budget to Actual	Cumulative % Chg
January	4.54%	116,776	100,591	(16,185)	(13.86%)	(13.86%)
February	5.16%	132,729	135,136	2,407	1.81%	(5.52%)
March	5.81%	149,406	151,873	2,467	1.65%	(2.84%)
April	6.97%	179,352	190,189	10,837	6.04%	(0.08%)
May	9.05%	232,737	243,624	10,887	4.68%	1.28%
June	12.07%	310,275	316,113	5,839	1.88%	1.45%
July	12.55%	322,820	374,454	51,634	15.99%	4.70%
August	12.57%	323,151	334,337	11,187	3.46%	4.47%
September	10.77%	277,041	312,985	35,944	12.97%	5.63%
October	9.34%	240,236				
November	5.43%	139,682				
December	5.73%	147,303				
	100%	2,571,508	2,159,303	115,016		5.63%



Accommodations

Comparison of Budget to Actual As of September 30, 2011



Real Estate and Rental Leasing

5 year Historical Comparison

As of September 30, 2011

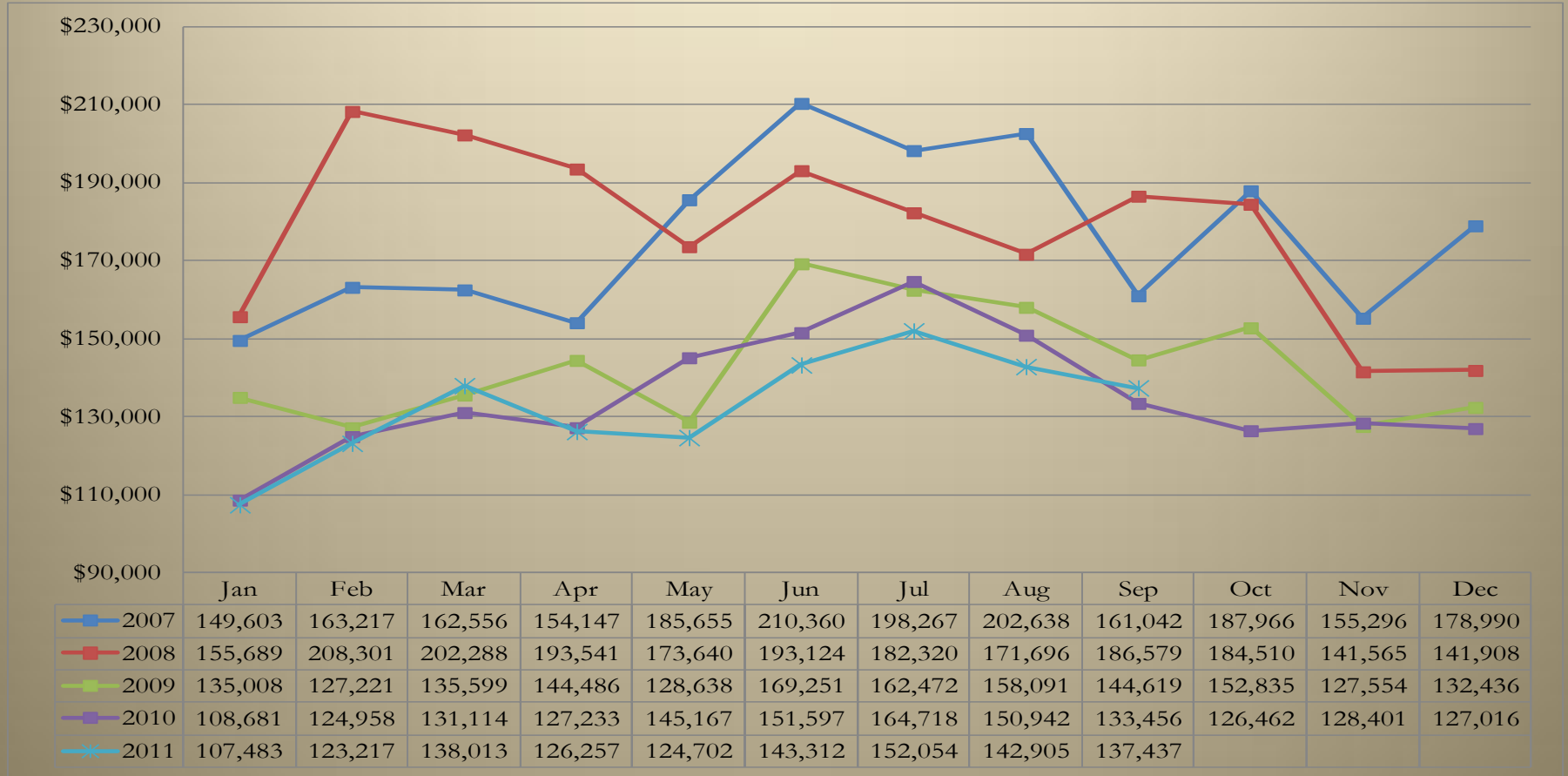
	2007	2008	2009	2010	2011	% Chg '07 to '08	% Chg '08 to '09	% Chg '09 to '10	% Chg '10 to '11	Cumulative % Chg '07 to '11	Cumulative % Chg '10 to '11
January	149,603	155,689	135,008	108,681	107,483	4.07%	(13.28%)	(19.50%)	(1.10%)	(28.15%)	(1.10%)
February	163,217	208,301	127,221	124,958	123,217	27.62%	(38.92%)	(1.78%)	(1.39%)	(26.25%)	(1.26%)
March	162,556	202,288	135,599	131,114	138,013	24.44%	(32.97%)	(3.31%)	5.26%	(22.44%)	1.09%
April	154,147	193,541	144,486	127,233	126,257	25.56%	(25.35%)	(11.94%)	(0.77%)	(21.37%)	0.61%
May	185,655	173,640	128,638	145,167	124,702	(6.47%)	(25.92%)	12.85%	(14.10%)	(23.98%)	(2.74%)
June	210,360	193,124	169,251	151,597	143,312	(8.19%)	(12.36%)	(10.43%)	(5.47%)	(25.60%)	(3.27%)
July	198,267	182,320	162,472	164,718	152,054	(8.04%)	(10.89%)	1.38%	(7.69%)	(25.23%)	(4.03%)
August	202,638	171,696	158,091	150,942	142,905	(15.27%)	(7.92%)	(4.52%)	(5.32%)	(25.83%)	(4.21%)
September	161,042	186,579	144,619	133,456	137,437	15.86%	(22.49%)	(7.72%)	2.98%	(24.70%)	(3.43%)
October	187,966	184,510	152,835	126,462		(1.84%)	(17.17%)	(17.26%)			
November	155,296	141,565	127,554	128,401		(8.84%)	(9.90%)	0.66%			
December	178,990	141,908	132,436	127,016		(20.72%)	(6.67%)	(4.09%)			
Year Total	2,109,739	2,135,161	1,718,211	1,619,745	1,195,380	1.20%	(19.53%)	(5.73%)	(3.43%)	(24.70%)	(3.43%)



Real Estate and Rental Leasing

5 year Historical Comparison

As of September 30, 2011



Real Estate and Rental Leasing

Comparison of Budget to Actual

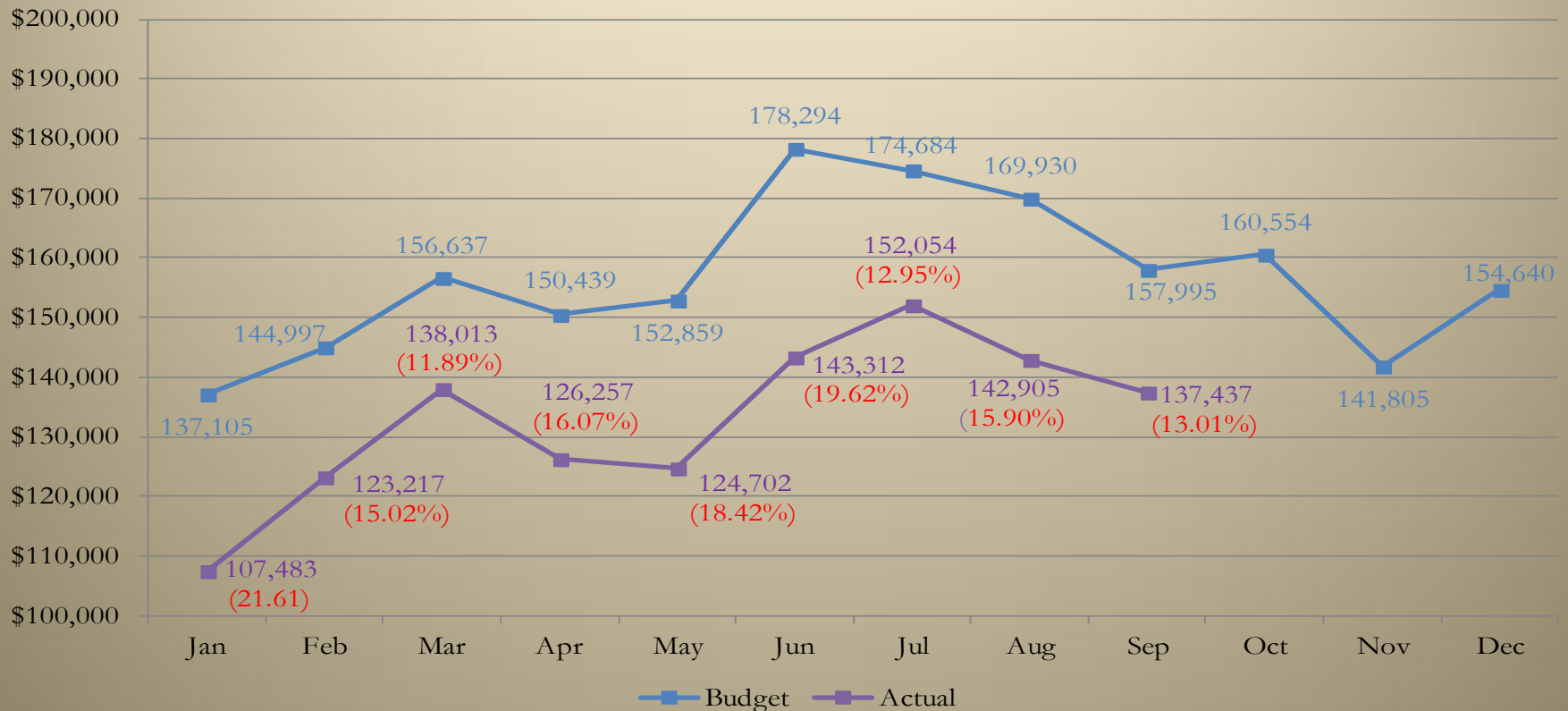
As of September 30, 2011

	Historical Percentage	Budget	Actual	\$ Chg Budget to Actual	% Chg Budget to Actual	Cumulative % Chg
January	7.29%	137,105	107,483	(29,622)	(21.61%)	(21.61%)
February	7.71%	144,997	123,217	(21,780)	(15.02%)	(18.22%)
March	8.33%	156,637	138,013	(18,624)	(11.89%)	(15.96%)
April	8.00%	150,439	126,257	(24,182)	(16.07%)	(15.99%)
May	8.13%	152,859	124,702	(28,157)	(18.42%)	(16.49%)
June	9.48%	178,294	143,312	(34,982)	(19.62%)	(17.10%)
July	9.29%	174,684	152,054	(22,630)	(12.95%)	(16.44%)
August	9.04%	169,930	142,905	(27,025)	(15.90%)	(16.36%)
September	8.40%	157,995	137,437	(20,558)	(13.01%)	(15.99%)
October	8.54%	160,554				
November	7.54%	141,805				
December	8.23%	154,640				
	100%	1,879,940	1,195,380	(227,560)		(15.99%)



Real Estate and Rental Leasing

Comparison of Budget to Actual As of September 30, 2011



Manufacturing

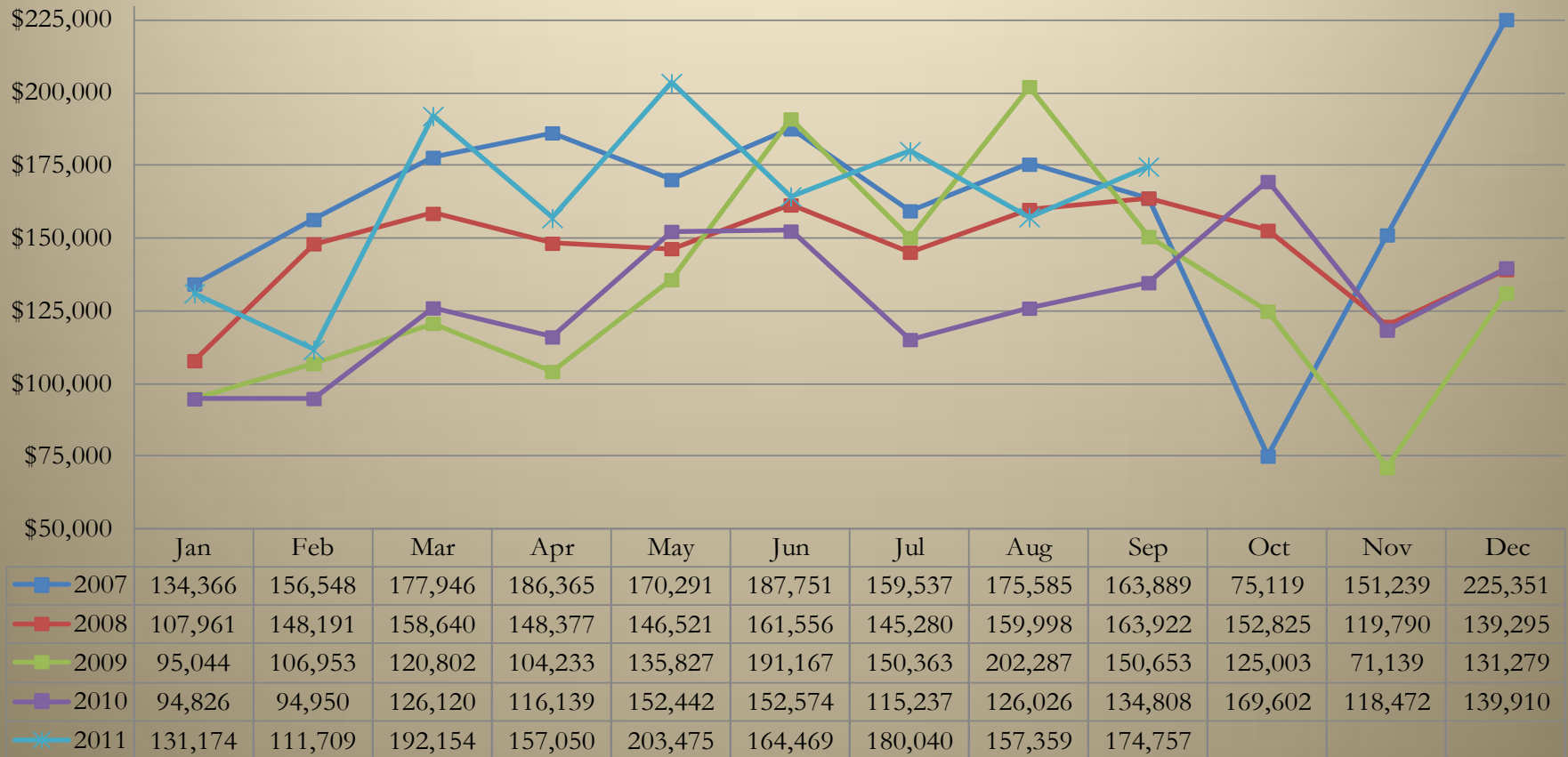
5 year Historical Comparison As of September 30, 2011

	2007	2008	2009	2010	2011	% Chg '07 to '08	% Chg '08 to '09	% Chg '09 to '10	% Chg '10 to '11	Cumulative % Chg '07 to '11	Cumulative % Chg '10 to '11
January	134,366	107,961	95,044	94,826	131,174	(19.65%)	(11.96%)	(0.23%)	38.33%	(2.38%)	38.33%
February	156,548	148,191	106,953	94,950	111,709	(5.34%)	(27.83%)	(11.22%)	17.65%	(16.51%)	27.98%
March	177,946	158,640	120,802	126,120	192,154	(10.85%)	(23.85%)	4.40%	52.36%	(7.21%)	37.72%
April	186,365	148,377	104,233	116,139	157,050	(20.38%)	(29.75%)	11.42%	35.23%	(9.64%)	37.05%
May	170,291	146,521	135,827	152,442	203,475	(13.96%)	(7.30%)	12.23%	33.48%	(3.63%)	36.12%
June	187,751	161,556	191,167	152,574	164,469	(13.95%)	18.33%	(20.19%)	7.80%	(5.25%)	30.25%
July	159,537	145,280	150,363	115,237	180,040	(8.94%)	3.50%	(23.36%)	56.23%	(2.79%)	33.77%
August	175,585	159,998	202,287	126,026	157,359	(8.88%)	26.43%	(37.70%)	24.86%	(3.78%)	32.62%
September	163,889	163,922	150,653	134,808	174,757	0.02%	(8.09%)	(10.52%)	29.63%	(2.65%)	32.26%
October	75,119	152,825	125,003	169,602		103.44%	(18.21%)	35.68%			
November	151,239	119,790	71,139	118,472		(20.79%)	(40.61%)	66.54%			
December	225,351	139,295	131,279	139,910		(38.19%)	(5.75%)	6.57%			
Year Total	1,963,988	1,752,356	1,584,748	1,541,106	1,472,188	(10.78%)	(9.56%)	(2.75%)	32.26%	(2.65%)	32.26%



Manufacturing

5 year Historical Comparison As of September 30, 2011



Manufacturing

Comparison of Budget to Actual As of September 30, 2011

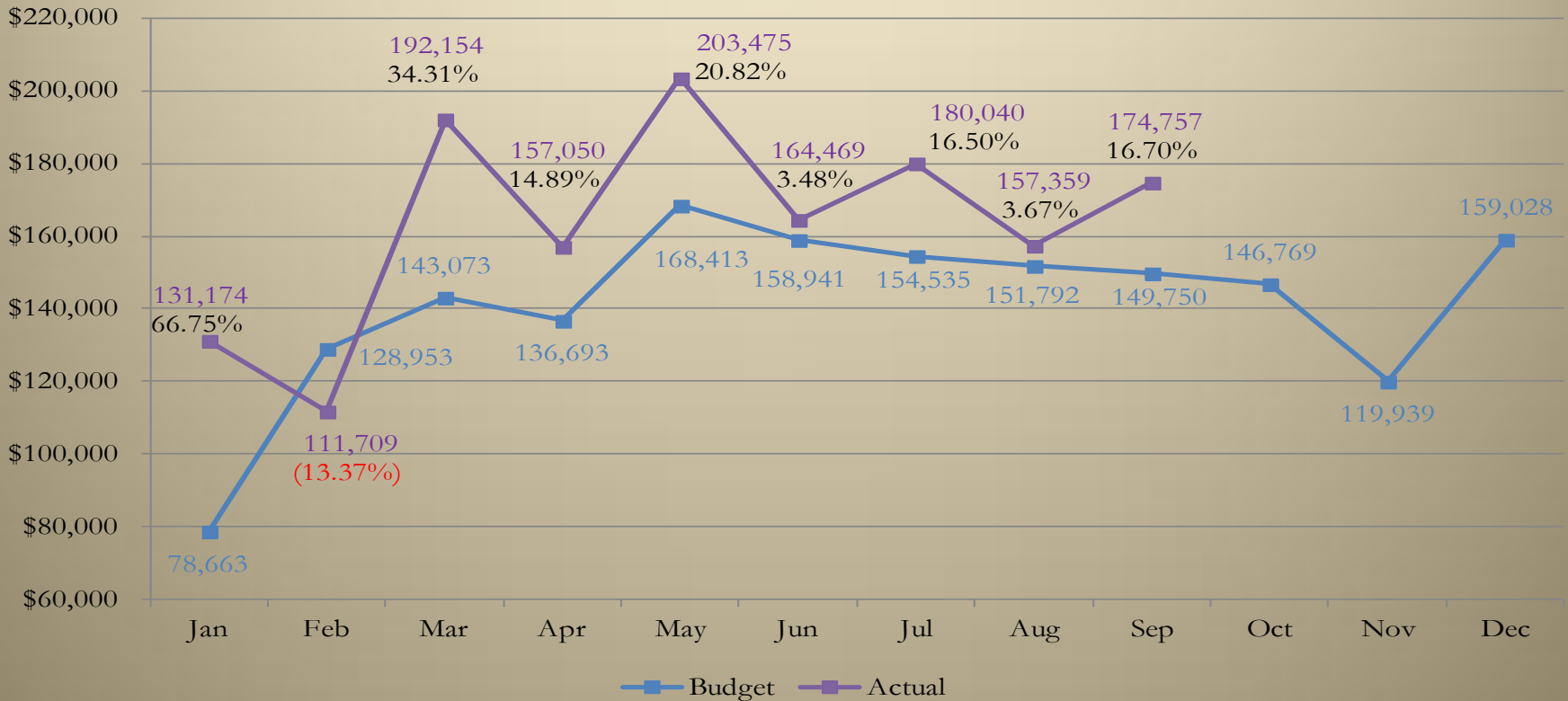
	Historical Percentage	Budget	Actual	\$ Chg Budget to Actual	% Chg Budget to Actual	Cumulative % Chg
January	4.64%	78,663	131,174	52,511	66.75%	66.75%
February	7.60%	128,953	111,709	(17,244)	(13.37%)	16.99%
March	8.43%	143,073	192,154	49,081	34.31%	24.05%
April	8.06%	136,693	157,050	20,357	14.89%	21.48%
May	9.93%	168,413	203,475	35,062	20.82%	21.31%
June	9.37%	158,941	164,469	5,529	3.48%	17.83%
July	9.11%	154,535	180,040	25,505	16.50%	17.62%
August	8.95%	151,792	157,359	5,567	3.67%	15.73%
September	8.83%	149,750	174,757	25,007	16.70%	15.85%
October	8.65%	146,769				
November	7.07%	119,939				
December	9.37%	159,028				
	100%	1,696,548	1,472,188	201,376		15.85%



Manufacturing

Comparison of Budget to Actual

As of September 30, 2011



Utilities

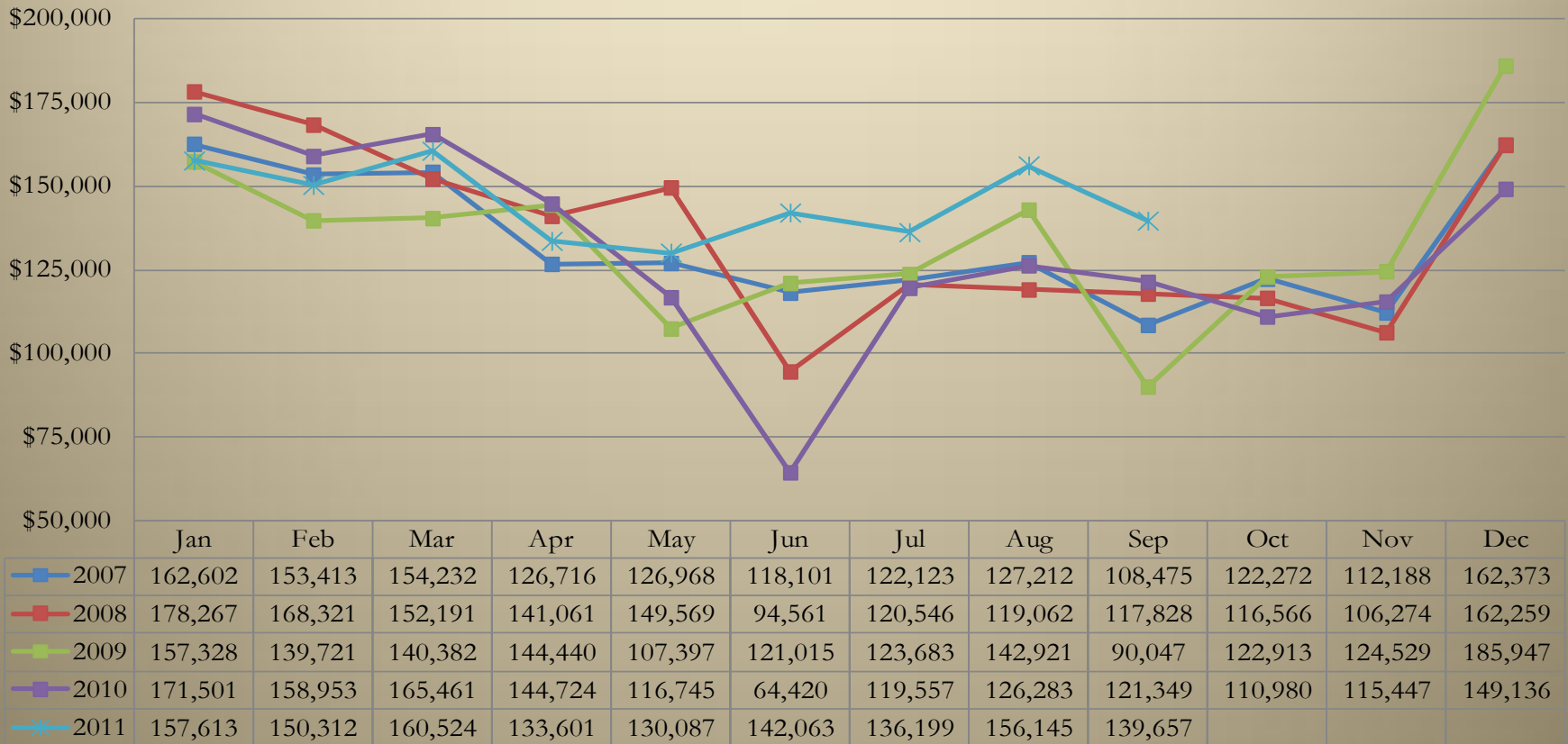
5 year Historical Comparison As of September 30, 2011

	2007	2008	2009	2010	2011	% Chg '07 to '08	% Chg '08 to '09	% Chg '09 to '10	% Chg '10 to '11	Cumulative % Chg '07 to '11	Cumulative % Chg '10 to '11
January	162,602	178,267	157,328	171,501	157,613	9.63%	(11.75%)	9.01%	(8.10%)	(3.07%)	(8.10%)
February	153,413	168,321	139,721	158,953	150,312	9.72%	(16.99%)	13.76%	(5.44%)	(2.56%)	(6.82%)
March	154,232	152,191	140,382	165,461	160,524	(1.32%)	(7.76%)	17.86%	(2.98%)	(0.38%)	(5.54%)
April	126,716	141,061	144,440	144,724	133,601	11.32%	2.40%	0.20%	(7.69%)	0.85%	(6.02%)
May	126,968	149,569	107,397	116,745	130,087	17.80%	(28.20%)	8.70%	11.43%	1.13%	(3.33%)
June	118,101	94,561	121,015	64,420	142,063	(19.93%)	27.98%	(46.77%)	120.53%	3.82%	6.38%
July	122,123	120,546	123,683	119,557	136,199	(1.29%)	2.60%	(3.34%)	13.92%	4.80%	7.33%
August	127,212	119,062	142,921	126,283	156,145	(6.41%)	20.04%	(11.64%)	23.65%	6.89%	9.26%
September	108,475	117,828	90,047	121,349	139,657	8.62%	(23.58%)	34.76%	15.09%	8.86%	9.86%
October	122,272	116,566	122,913	110,980		(4.67%)	5.44%	(9.71%)			
November	112,188	106,274	124,529	115,447		(5.27%)	17.18%	(7.29%)			
December	162,373	162,259	185,947	149,136		(0.07%)	14.60%	(19.80%)			
Year Total	1,596,675	1,626,505	1,600,323	1,564,556	1,306,200	1.87%	(1.61%)	(2.24%)	9.86%	8.86%	9.86%



Utilities

5 year Historical Comparison As of September 30, 2011



Utilities

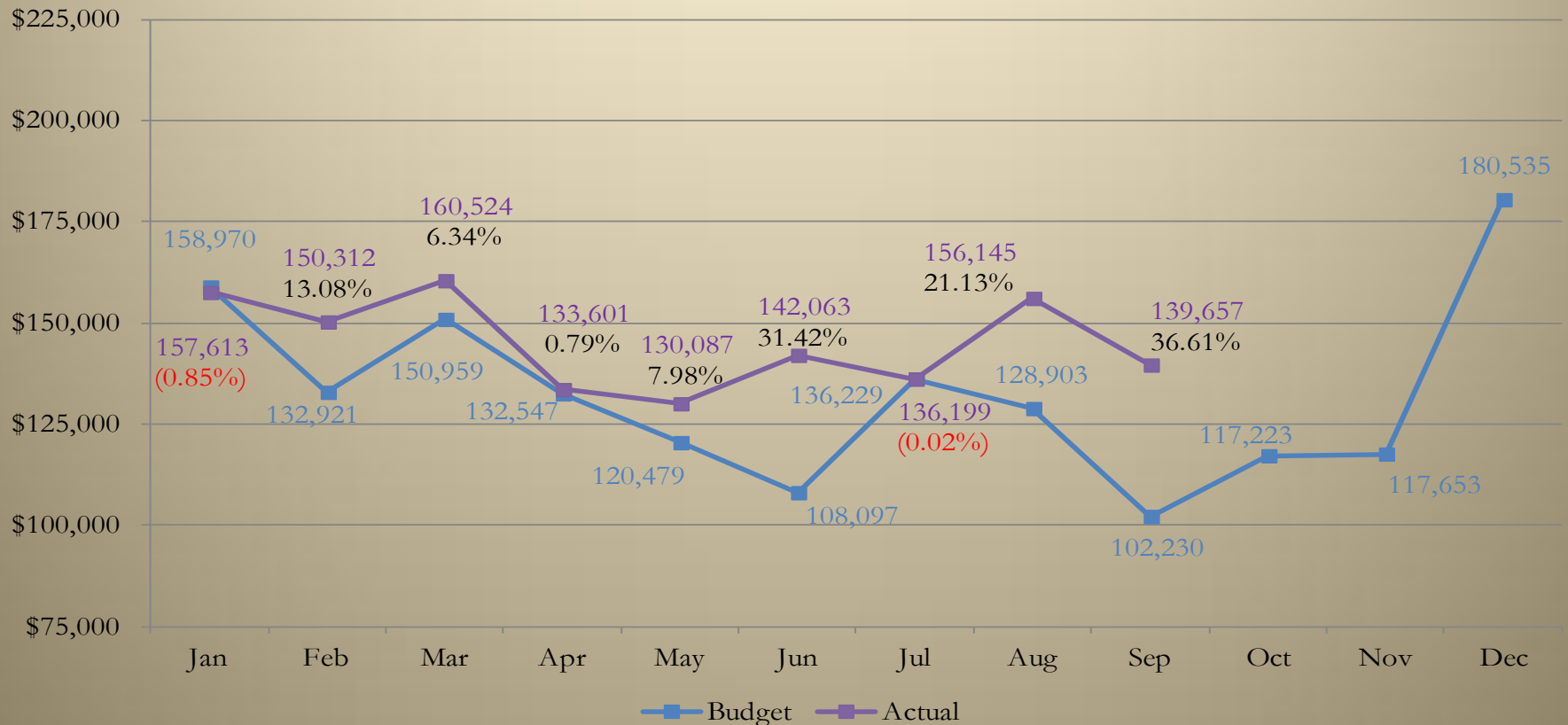
Comparison of Budget to Actual As of September 30, 2011

	Historical Percentage	Budget	Actual	\$ Chg Budget to Actual	% Chg Budget to Actual	Cumulative % Chg
January	10.02%	158,970	157,613	(1,357)	(0.85%)	(0.85%)
February	8.38%	132,921	150,312	17,391	13.08%	5.49%
March	9.51%	150,959	160,524	9,565	6.34%	5.78%
April	8.35%	132,547	133,601	1,054	0.79%	4.63%
May	7.59%	120,479	130,087	9,608	7.98%	5.21%
June	6.81%	108,097	142,063	33,966	31.42%	8.74%
July	8.59%	136,229	136,199	(30)	(0.02%)	7.47%
August	8.12%	128,903	156,145	27,242	21.13%	9.11%
September	6.44%	102,230	139,657	37,427	36.61%	11.51%
October	7.39%	117,223				
November	7.41%	117,653				
December	11.38%	180,535				
	100%	1,586,746	1,306,200	134,865		11.51%



Utilities

Comparison of Budget to Actual As of September 30, 2011



Other Services (Except Public Administration)

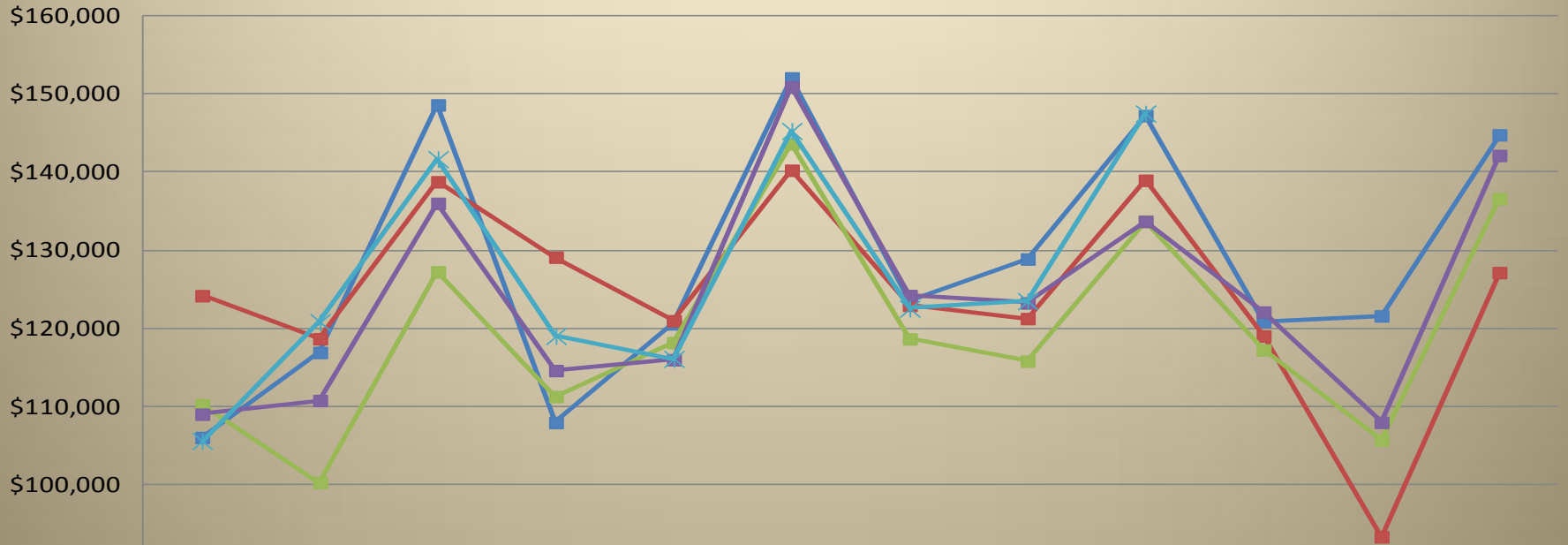
5 year Historical Comparison As of September 30, 2011

	2007	2008	2009	2010	2011	% Chg '07 to '08	% Chg '08 to '09	% Chg '09 to '10	% Chg '10 to '11	Cumulative % Chg '07 to '11	Cumulative % Chg '10 to '11
January	106,043	124,181	110,236	109,020	105,593	17.10%	(11.23%)	(1.10%)	(3.14%)	(0.42%)	(3.14%)
February	116,917	118,673	100,259	110,766	120,802	1.50%	(15.52%)	10.48%	9.06%	1.54%	3.01%
March	148,601	138,763	127,237	136,001	141,664	(6.62%)	(8.31%)	6.89%	4.16%	(0.94%)	3.45%
April	107,960	129,108	111,266	114,602	119,026	19.59%	(13.82%)	3.00%	3.86%	1.58%	3.55%
May	120,577	120,975	118,184	115,986	116,106	0.33%	(2.31%)	(1.86%)	0.10%	0.52%	2.87%
June	152,056	140,238	143,622	150,906	145,265	(7.77%)	2.41%	5.07%	(3.74%)	(0.49%)	1.52%
July	123,569	122,943	118,656	124,206	122,532	(0.51%)	(3.49%)	4.68%	(1.35%)	(0.54%)	1.10%
August	128,878	121,254	115,809	123,252	123,485	(5.92%)	(4.49%)	6.43%	0.19%	(1.01%)	0.99%
September	147,226	138,953	133,738	133,684	147,498	(5.62%)	(3.75%)	(0.04%)	10.33%	(0.86%)	2.11%
October	120,903	119,023	117,247	122,085		(1.55%)	(1.49%)	4.13%			
November	121,595	93,320	105,691	107,975		(23.25%)	13.26%	2.16%			
December	144,769	127,138	136,596	142,123		(12.18%)	7.44%	4.05%			
Year Total	1,539,094	1,494,570	1,438,541	1,490,607	1,141,971	(2.89%)	(3.75%)	3.62%	2.11%	(0.86%)	2.11%



Other Services (Except Public Administration)

5 year Historical Comparison
As of September 30, 2011



	Jan	Feb	Mar	Apr	May	Jun	Jul	Aug	Sep	Oct	Nov	Dec
2007	106,043	116,917	148,601	107,960	120,577	152,056	123,569	128,878	147,226	120,903	121,595	144,769
2008	124,181	118,673	138,763	129,108	120,975	140,238	122,943	121,254	138,953	119,023	93,320	127,138
2009	110,236	100,259	127,237	111,266	118,184	143,622	118,656	115,809	133,738	117,247	105,691	136,596
2010	109,020	110,766	136,001	114,602	115,986	150,906	124,206	123,252	133,684	122,085	107,975	142,123
2011	105,593	120,802	141,664	119,026	116,106	145,265	122,532	123,485	147,498			



Other Services (Except Public Administration)

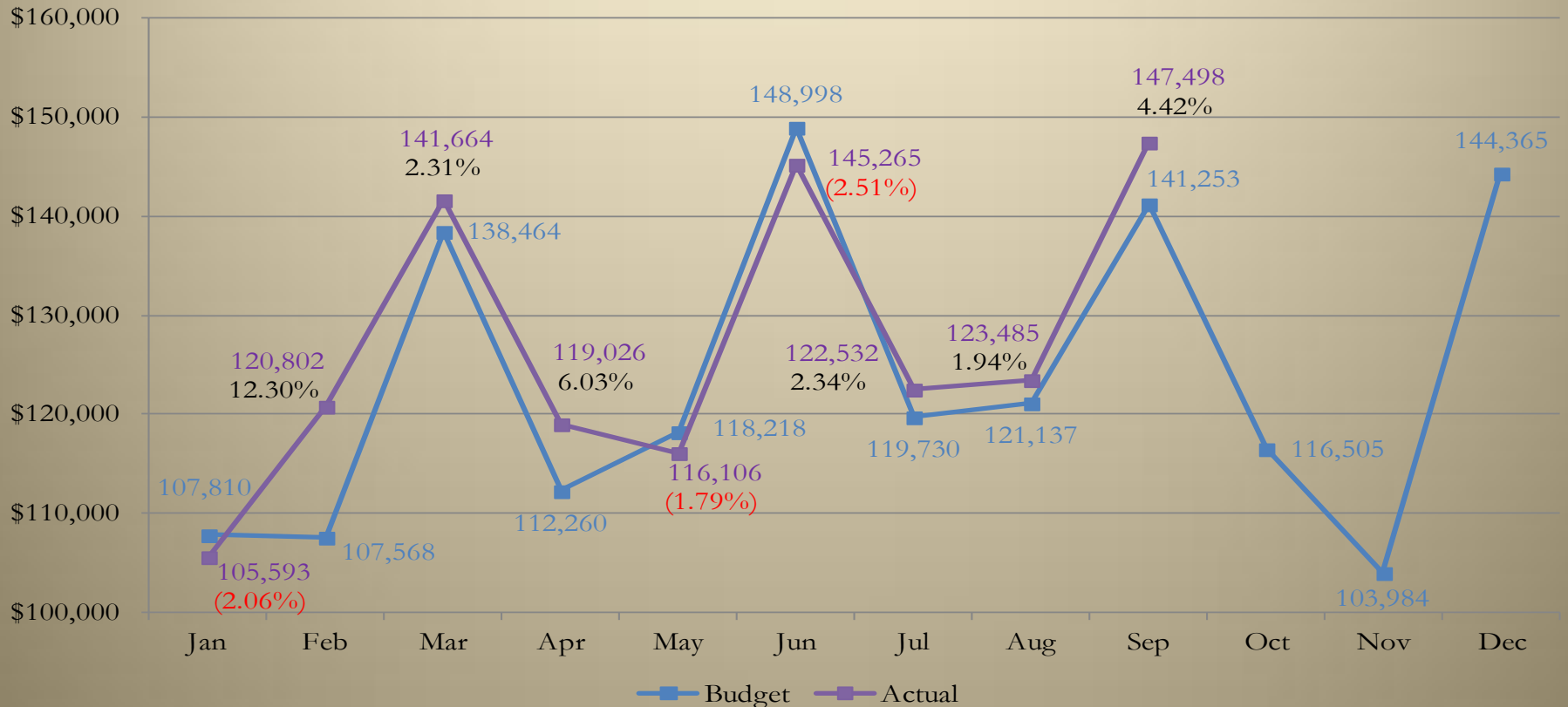
Comparison of Budget to Actual As of September 30, 2011

	Historical Percentage	Budget	Actual	\$ Chg Budget to Actual	% Chg Budget to Actual	Cumulative % Chg
January	7.28%	107,810	105,593	(2,217)	(2.06%)	(2.06%)
February	7.27%	107,568	120,802	13,234	12.30%	5.12%
March	9.35%	138,464	141,664	3,200	2.31%	4.02%
April	7.58%	112,260	119,026	6,766	6.03%	4.50%
May	7.99%	118,218	116,106	(2,112)	(1.79%)	3.23%
June	10.07%	148,998	145,265	(3,733)	(2.51%)	2.06%
July	8.09%	119,730	122,532	2,802	2.34%	2.10%
August	8.18%	121,137	123,485	2,349	1.94%	2.08%
September	9.54%	141,253	147,498	6,244	4.42%	2.38%
October	7.87%	116,505				
November	7.02%	103,984				
December	9.75%	144,365				
	100%	1,480,291	1,141,971	26,534		2.38%



Other Services (Except Public Administration)

Comparison of Budget to Actual As of September 30, 2011



Construction

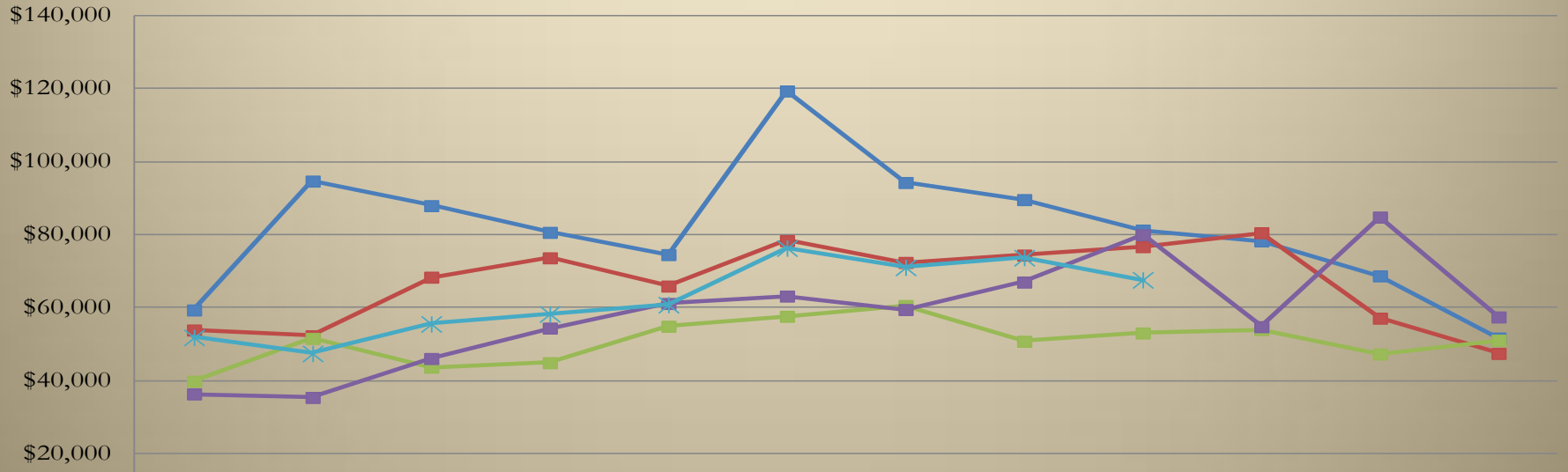
5 year Historical Comparison As of September 30, 2011

	2007	2008	2009	2010	2011	% Chg '07 to '08	% Chg '08 to '09	% Chg '09 to '10	% Chg '10 to '11	Cumulative % Chg '07 to '11	Cumulative % Chg '10 to '11
January	59,333	53,841	39,820	36,319	51,813	(9.26%)	(26.04%)	(8.79%)	42.66%	(12.67%)	42.66%
February	94,650	52,257	51,542	35,356	47,418	(44.79%)	(1.37%)	(31.40%)	34.12%	(35.56%)	38.44%
March	87,927	68,325	43,651	46,036	55,508	(22.29%)	(36.11%)	5.46%	20.58%	(36.03%)	31.46%
April	80,597	73,621	44,888	54,368	58,250	(8.66%)	(39.03%)	21.12%	7.14%	(33.96%)	23.77%
May	74,506	65,880	54,885	61,115	60,785	(11.58%)	(16.69%)	11.35%	(0.54%)	(31.04%)	17.40%
June	119,325	78,326	57,598	63,140	76,283	(34.36%)	(26.46%)	9.62%	20.82%	(32.20%)	18.13%
July	94,255	72,365	60,557	59,449	71,007	(23.22%)	(16.32%)	(1.83%)	19.44%	(31.04%)	18.35%
August	89,570	74,375	50,778	66,970	73,660	(16.96%)	(31.73%)	31.89%	9.99%	(29.34%)	17.03%
September	81,206	76,678	53,018	79,949	67,592	(5.58%)	(30.86%)	50.80%	(15.46%)	(28.03%)	11.86%
October	78,271	80,496	53,964	54,755		2.84%	(32.96%)	1.46%			
November	68,682	57,082	47,254	84,800		(16.89%)	(17.22%)	79.46%			
December	51,641	47,420	51,030	57,419		(8.17%)	7.61%	12.52%			
Year Total	979,962	800,667	608,987	699,674	562,317	(18.30%)	(23.94%)	14.89%	11.86%	(28.03%)	11.86%



Construction

5 year Historical Comparison
As of September 30, 2011



	Jan	Feb	Mar	Apr	May	Jun	Jul	Aug	Sep	Oct	Nov	Dec
2007	59,333	94,650	87,927	80,597	74,506	119,325	94,255	89,570	81,206	78,271	68,682	51,641
2008	53,841	52,257	68,325	73,621	65,880	78,326	72,365	74,375	76,678	80,496	57,082	47,420
2009	39,820	51,542	43,651	44,888	54,885	57,598	60,557	50,778	53,018	53,964	47,254	51,030
2010	36,319	35,356	46,036	54,368	61,115	63,140	59,449	66,970	79,949	54,755	84,800	57,419
2011	51,813	47,418	55,508	58,250	60,785	76,283	71,007	73,660	67,592			



Construction

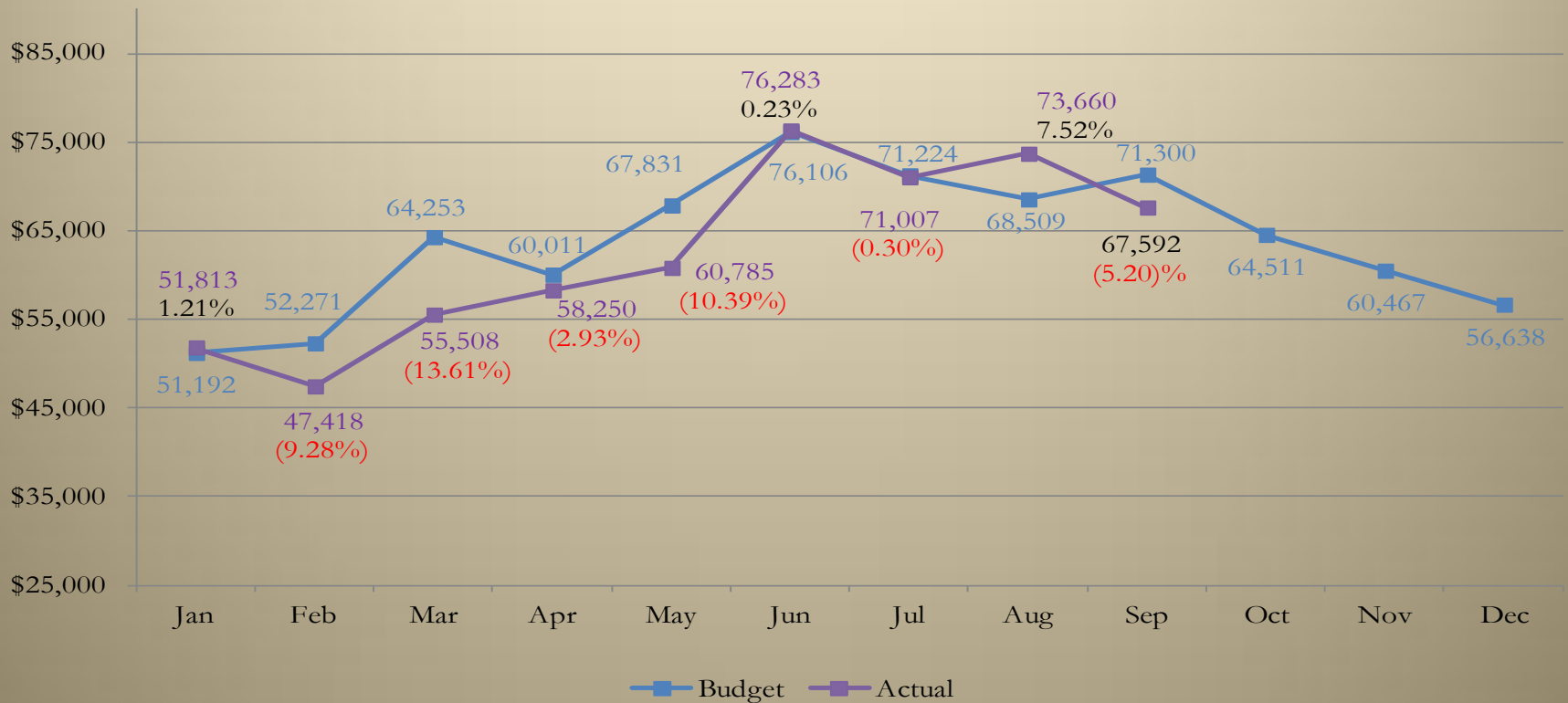
Comparison of Budget to Actual As of September 30, 2011

	Historical Percentage	Budget	Actual	\$ Chg Budget to Actual	% Chg Budget to Actual	Cumulative % Chg
January	6.70%	51,192	51,813	621	1.21%	1.21%
February	6.84%	52,271	47,418	(4,853)	(9.28%)	(4.09%)
March	8.41%	64,253	55,508	(8,745)	(13.61%)	(7.74%)
April	7.85%	60,011	58,250	(1,761)	(2.93%)	(6.47%)
May	8.87%	67,831	60,785	(7,046)	(10.39%)	(7.37%)
June	9.96%	76,106	76,283	177	0.23%	(5.81%)
July	9.32%	71,224	71,007	(216)	(0.30%)	(4.93%)
August	8.96%	68,509	73,660	5,151	7.52%	(3.26%)
September	9.33%	71,300	67,592	(3,708)	(5.20%)	(3.50%)
October	8.44%	64,511				
November	7.91%	60,467				
December	7.41%	56,638				
	100%	764,313	562,317	(20,380)		(3.50%)



Construction

Comparison of Budget to Actual As of September 30, 2011



Professional, Scientific, and Tech Services

5 year Historical Comparison

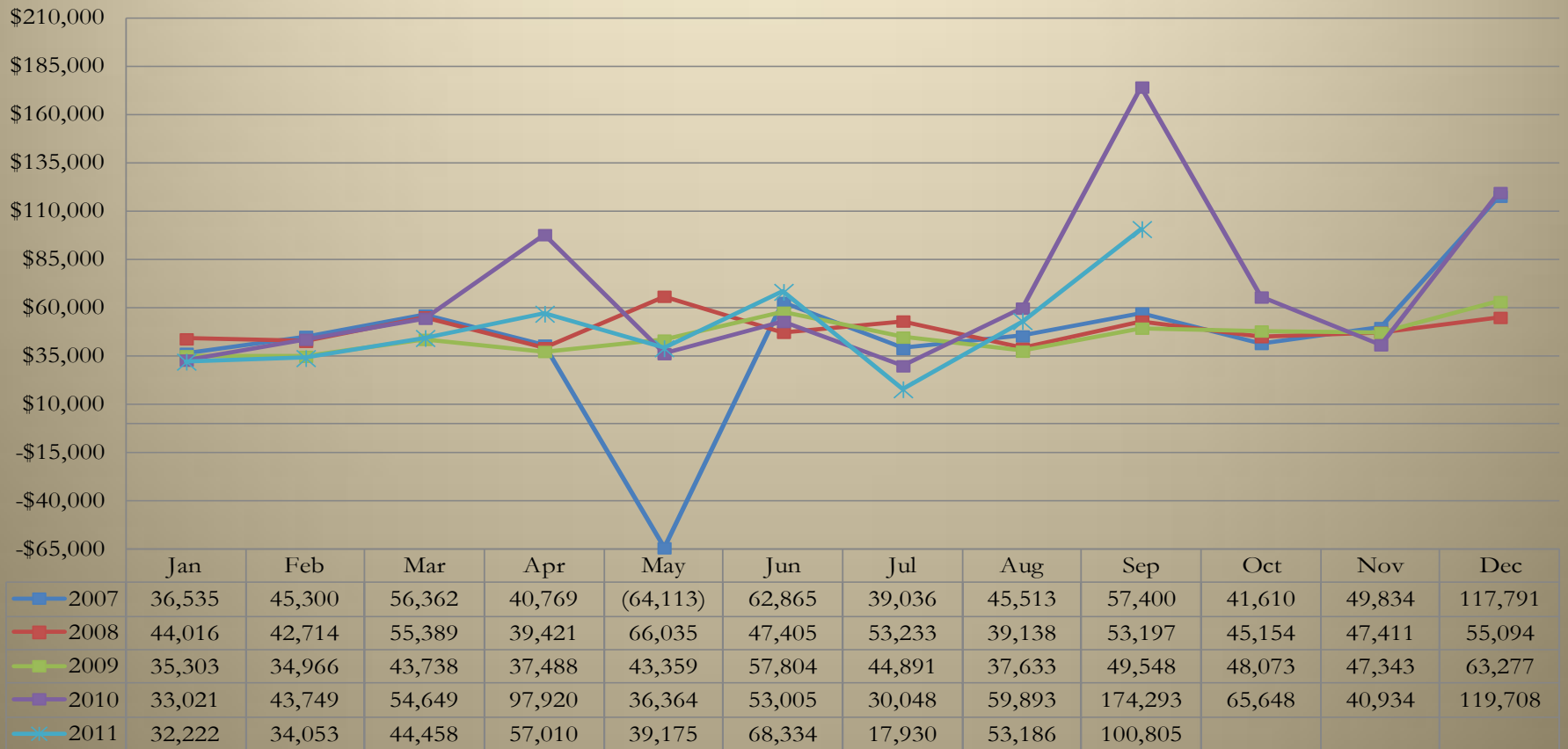
As of September 30, 2011

	2007	2008	2009	2010	2011	% Chg '07 to '08	% Chg '08 to '09	% Chg '09 to '10	% Chg '10 to '11	Cumulative % Chg '07 to '11	Cumulative % Chg '10 to '11
January	36,535	44,016	35,303	33,021	32,222	20.48%	(19.80%)	(6.47%)	(2.42%)	(11.80%)	(2.42%)
February	45,300	42,714	34,966	43,749	34,053	(5.71%)	(18.14%)	25.12%	(22.16%)	(19.01%)	(13.67%)
March	56,362	55,389	43,738	54,649	44,458	(1.73%)	(21.03%)	24.94%	(18.65%)	(19.87%)	(15.74%)
April	40,769	39,421	37,488	97,920	57,010	(3.31%)	(4.90%)	161.21%	(41.78%)	(6.27%)	(26.86%)
May	(64,113)	66,035	43,359	36,364	39,175	(203.00%)	(34.34%)	(16.13%)	7.73%	80.16%	(22.12%)
June	62,865	47,405	57,804	53,005	68,334	(24.59%)	21.94%	(8.30%)	28.92%	54.88%	(13.64%)
July	39,036	53,233	44,891	30,048	17,930	36.37%	(15.67%)	(33.06%)	(40.33%)	35.26%	(15.93%)
August	45,513	39,138	37,633	59,893	53,186	(14.01%)	(3.85%)	59.15%	(11.20%)	32.07%	(15.24%)
September	57,400	53,197	49,548	174,293	100,805	(7.32%)	(6.86%)	251.77%	(42.16%)	39.89%	(23.29%)
October	41,610	45,154	48,073	65,648		8.52%	6.46%	36.56%			
November	49,834	47,411	47,343	40,934		(4.86%)	(0.14%)	(13.54%)			
December	117,791	55,094	63,277	119,708		(53.23%)	14.85%	89.18%			
Year Total	528,903	588,207	543,422	809,231	447,172	11.21%	(7.61%)	48.91%	(23.29%)	39.89%	(23.29%)



Professional, Scientific, and Tech Services

5 year Historical Comparison
As of September 30, 2011



Professional, Scientific, and Tech Services

Comparison of Budget to Actual

As of September 30, 2011

	Historical Percentage	Budget	Actual	\$ Chg Budget to Actual	% Chg Budget to Actual	Cumulative % Chg
January	5.91%	36,237	32,222	(4,015)	(11.08%)	(11.08%)
February	7.20%	44,167	34,053	(10,114)	(22.90%)	(17.57%)
March	8.48%	51,994	44,458	(7,536)	(14.49%)	(16.36%)
April	7.73%	47,427	57,010	9,583	20.21%	(6.72%)
May	9.87%	60,514	39,175	(21,339)	(35.26%)	(13.91%)
June	8.38%	51,405	68,334	16,929	32.93%	(5.65%)
July	6.45%	39,591	17,930	(21,661)	(54.71%)	(11.51%)
August	7.38%	45,276	53,186	7,909	17.47%	(8.03%)
September	11.26%	69,093	100,805	31,712	45.90%	0.33%
October	6.75%	41,383				
November	7.75%	47,524				
December	12.85%	78,800				
	100%	613,411	447,172	1,469		0.33%



Professional, Scientific, and Tech Services

Comparison of Budget to Actual As of September 30, 2011

