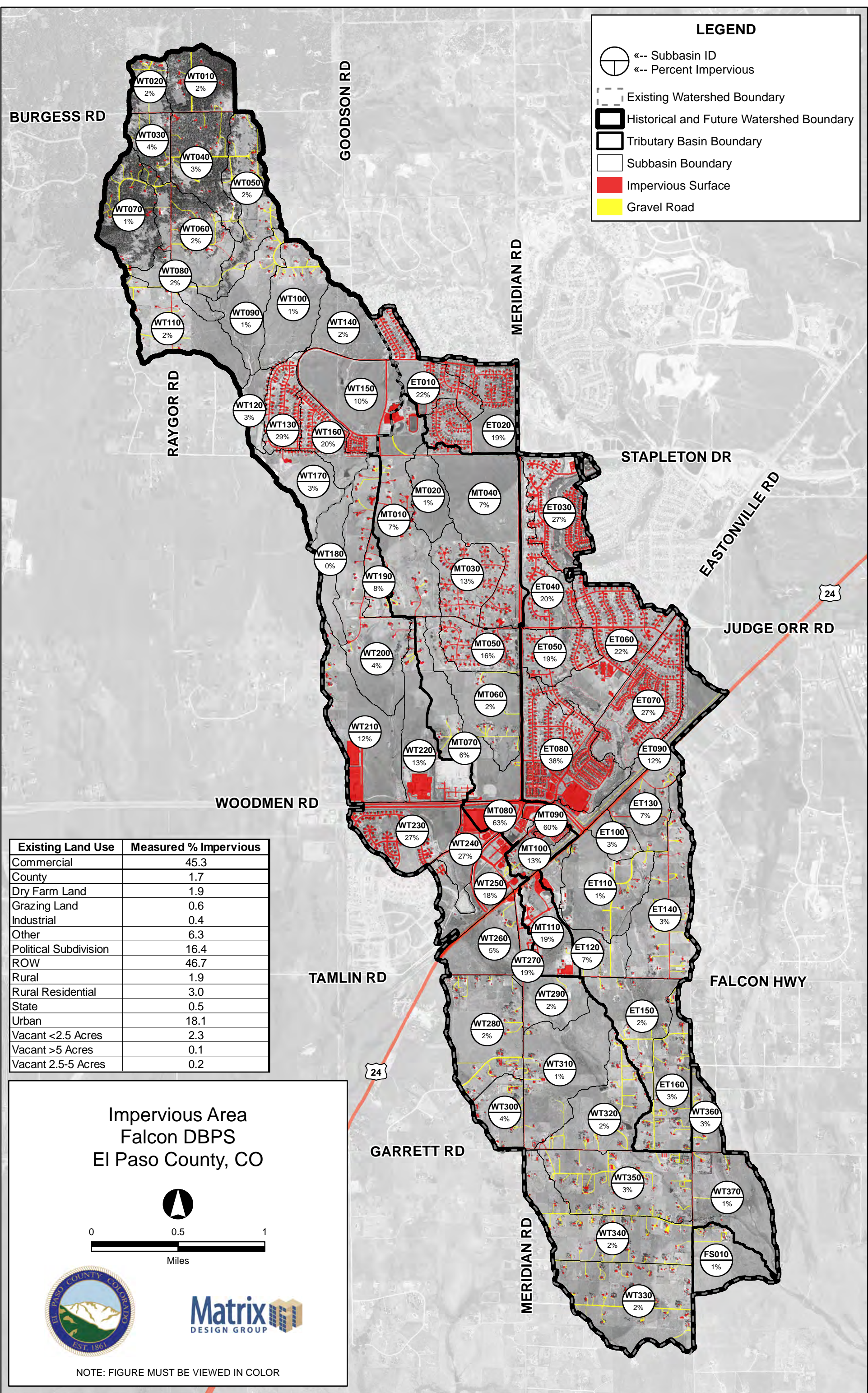


### LEGEND

- Subbasin ID
- Percent Impervious
- Existing Watershed Boundary
- Historical and Future Watershed Boundary
- Tributary Basin Boundary
- Subbasin Boundary
- Impervious Surface
- Gravel Road



Existing Land Use	Measured % Impervious
Commercial	45.3
County	1.7
Dry Farm Land	1.9
Grazing Land	0.6
Industrial	0.4
Other	6.3
Political Subdivision	16.4
ROW	46.7
Rural	1.9
Rural Residential	3.0
State	0.5
Urban	18.1
Vacant <2.5 Acres	2.3
Vacant >5 Acres	0.1
Vacant 2.5-5 Acres	0.2

### Impervious Area Falcon DBPS El Paso County, CO

Miles

NOTE: FIGURE MUST BE VIEWED IN COLOR

FILE: G:\gis\_projects\Falcon\_Creek\_DBPS\active\apps\20111018\_public\_meeting\impervious.mxd, 10/18/2011, ron\_ramold