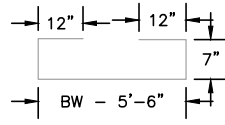


"H" BARS



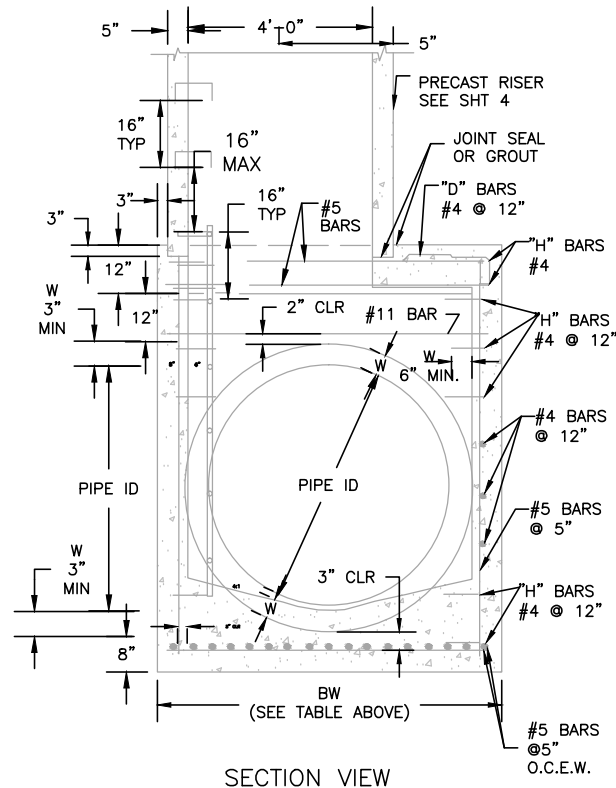
"D" BARS

| PIPE ID | BW |
|-----------------|----------|
| 48" AND SMALLER | 6'-4" |
| 54" | 6'-10" |
| 60" AND LARGER | OD + 16" |

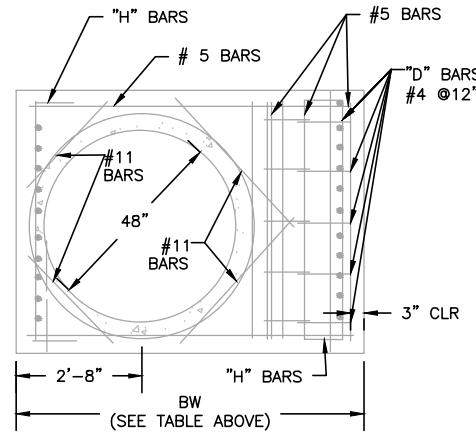
NOTES

- TYPE I MANHOLE SHALL BE USED WHEN APPROPRIATE AND TYPICALLY FOR PIPE SIZES LARGER THAN 30 INCHES I.D..
- VIEW AND DETAILS SHOWN ARE TYPICAL FOR STRAIGHT THROUGH DESIGN ONLY. DESIGN ENGINEER SHALL DETERMINE MANHOLE BASE CONFIGURATION AND DIMENSIONS FOR PARTICULAR PIPE SIZES AND ALIGNMENT.
- EITHER LADDER OR STEPS SHALL BE INSTALLED WHEN MANHOLE DEPTH EXCEEDS 30". LOWEST STEP SHALL BE BE A MAXIMUM OF 16" ABOVE THE FLOOR.
- FLOOR OF THE MANHOLE SHALL BE TROWELLED TO A SMOOTH, HARD SURFACE AND SHALL SLOPE TOWARDS THE OUTLET (8:1 MAX., 1/2" PER FT. MIN). FLOOR SHALL BE SHAPED AND CHANNLED; SEE SD_3-2 FOR TYPICAL CHANNEL DETAILS.

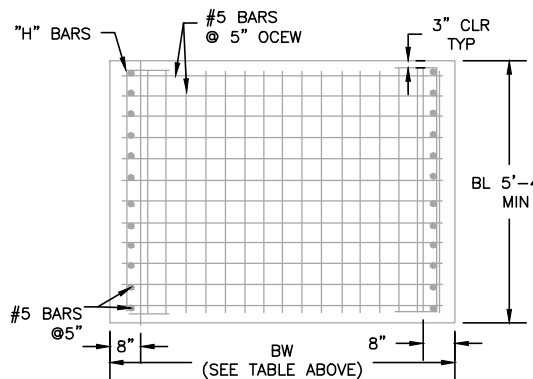
SCALE: NOT TO SCALE



SECTION VIEW



SLAB REINFORCING



BASE REINFORCING

July 9, 2009

DATE APPROVED:

André Brackin

DEPARTMENT OF TRANSPORTATION

Storm Sewer Manhole Detail
Type I
Standard Drawing

REVISION DATE:

7/9/09

FILE NAME:

SD_3-1

